

# Geospatial Modeling & Visualization

A Method Store for Advanced Survey  
and Modeling Technologies

GMV Geophysics GPS Modeling Digital Photogrammetry Scanning Equipment Data by Region

## Leica C10: Starting a New Project

This workflow will show you how to create a new project prior to scanning with the Leica C10 Laser Scanner.

*Hint: You can click on any image to see a larger version.*

### Start a new project

From the main menu click the 'Manage' icon.

Click 'New' to start a new project



Click into the 'Name' box and a keyboard will appear. Enter your desired project name and click 'Ent'.

Hit 'Store' to store the project folder

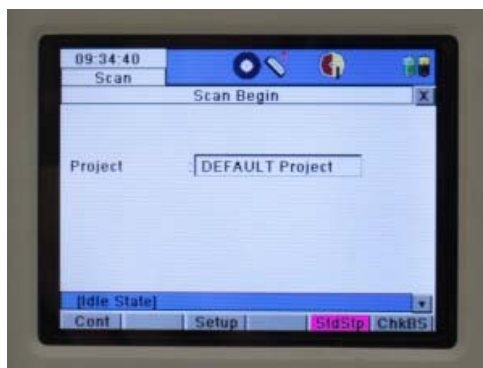
### SET UP A NEW SCAN STATION

You will now see your project highlighted in the 'Project list'. Click 'Cont'.

This will return you to the main menu – click on the 'Scan' icon.



Click 'NewSt' to create a new station setup. Confirm your project is listed. Choose 'StdStp' (Standard Setup highlighted in magenta below).



## SELECT PRESETS

Click the drop down arrow to the right of the 'Presets' menu

Select the appropriate preset or enter a custom field of view.



Preset	Horizontal FoV°	Vertical FoV°
Custom View	User defined	User Defined
Quick Scan	Defined by QS aiming	135(-45- +90)
Rectangle 60×60	60	60
Rectangle 90×90	90	90
Rectangle 360×60	360	60
Rectangle 360×90	360	90
Target all	360	270

## SET RESOLUTION

Click into the 'Resolution' tab and choose the resolution desired. We are initially recommending a 7 minute 'Medium Res' Scan.

Preset	Horizontal Spacing	Vertical Spacing	Range
custom res	user defined	user defined	user defined
low res	.2m	.2m	100m
medium res	.1m	.1m	100m
high res	.05m	.05m	100m
highest res	.02m	.02m	100m

Once you have chosen your resolution you will see an indication of the level of detail of your results. (At Medium Resolution this will give you a point spacing of 10mm at 10m, 20mm at 20m and so on).

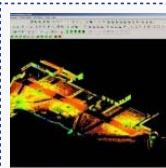


## RGB DATA

If RGB data is important, it is recommended that you manually set the exposure. Click on the Image Ctrl Tab. Set Exposure to Manual. Click on ChkExp tab at bottom of screen to check the exposure. Manually turn the scanner around the field of view, adjusting the exposure with the pull tab on the right. Once the exposure is correct, click the return key and **note the value of the Time (ms)**. Use this value for subsequent scans in the area. Adjust this number if lighting conditions or locations change.

## CONTINUE TO...

Continue to part 3 in the series, [Leica C10: Starting a Scan](#)



You are reading the series: [Leica C10 Scanning Workflow](#)  
[Leica C10: Setting Up The C10](#)  
 Leica C10: Starting a New Project  
[Leica C10: Starting a Scan](#)  
[Leica C10: Exporting Your Scan Data](#)

Please cite this document as: Green, Vance. 2012. Leica C10: Starting a New Project. CAST Technical Publications Series. Number 7400. <http://gmvcast.ark.edu/uncategorized/leica-c10-starting-a-new-project-2/>. [Date accessed: 9 August 2012].

Login

[Login](#)

© 2012 - Geospatial Modeling & Visualization