

Geospatial Modeling & Visualization

A Method Store for Advanced Survey and Modeling Technologies

[GMV](#) [Geophysics](#) [GPS](#) [Modeling](#) [Digital Photogrammetry](#) [3D Scanning](#) [Equipment](#) [Data and Projects by Region](#)

Tips for Breuckmann Scanning

Basic Considerations

Once you have set up your project templates you are ready to begin collecting scan data. Some things to consider are...

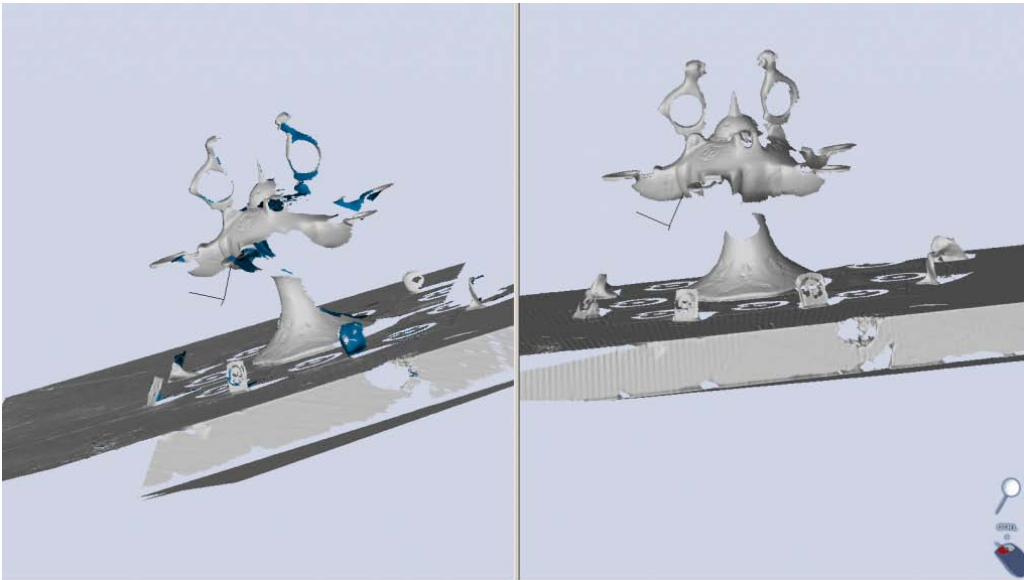
Lighting Conditions

Minimizing ambient light is essential for collecting good scan data with the Breuckmann. Even small amounts of ambient light can cause problems. When scanning outdoors working at night is often the best option. When scanning during the day a blackout tent is needed.



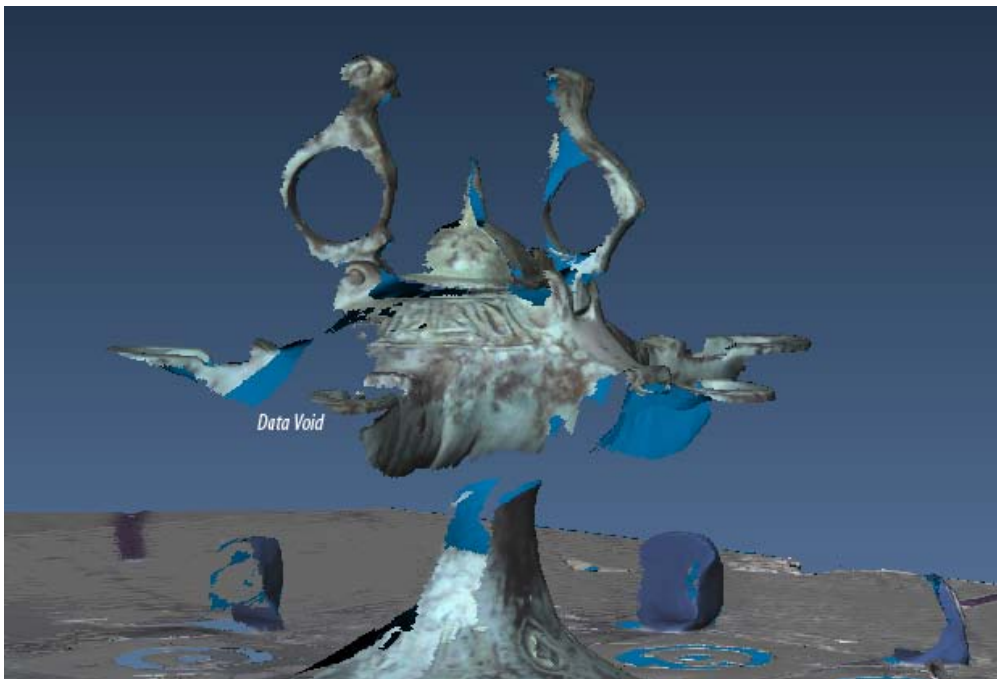
Scan overlap

In order to collect data all the way around an object or across a flat object's surface you will likely have to take multiple scans. Ensuring that there is enough overlap between scans to find good match points is important. Here you can see more than 60% overlap between adjacent scans.



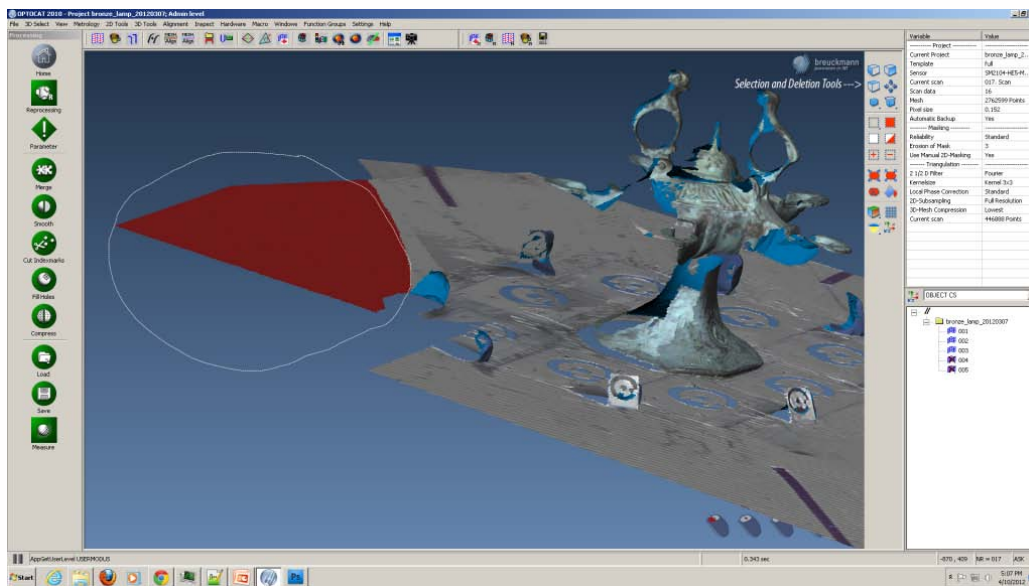
Data Voids

As you add and align scans, check for voids or gaps in the dataset. You can easily fill these in with additional scans while everything is set up.



Delete Unwanted Data

As you are collecting scans, you can delete unwanted data by switching to the processing screen. Shift and left click to select unwanted areas. Then delete using the 'delete all selected element' button.



Please cite this document as: Opitz, Rachel. 2012. Tips for Breuckmann Scanning. CAST Technical Publications Series. Number 7055. <http://gm.v.cast.uark.edu/scanning/hardware/breuckmann-he/tips-for-breuckmann-scanning/>. [Date accessed: 27 April 2013]. [Last Updated: 17 May 2012]. *Disclaimer: All logos and trademarks remain the property of their respective owners.*

Login

[Log in](#)

© 2013 - Geospatial Modeling & Visualization