

Geospatial Modeling & Visualization

A Method Store for Advanced Survey and Modeling Technologies

GMV Geophysics GPS Modeling Digital Photogrammetry 3D Scanning Equipment Data and Projects by Region

Leica Cyclone 7.1.1 : Interface Basics

[DEFINITION OF TERMS](#)

[HIERARCHY OF OBJECTS](#)

What is a [ScanWorld](#)?

[HOW TO CREATE A NEW DATABASE/PROJECT](#)

[IMPORTING DATA INTO CYCLONE](#)

[TRANSFERRING AND OPTIMIZING DATABASES](#)

[BASIC CYCLONE TOOLS](#)

[COMMON SHORTCUT KEYS](#)

ScanWorld: A single scan or collection of scans that are aligned to a common coordinate system. Scanworlds contain Control Spaces and Model Spaces.



ControlSpace : Contains the constraint information used to register multiple scans together.



ModelSpace: Contains information from the database that has been modeled, process, or changed in some way.



ModelSpace

Views: Where you make any/all changes on a point cloud or create 3D models.

TruSpace: New to Cyclone 7. Truspaces are views that are constrained to individual scanner locations. Note you cannot PAN a view in a truspace. Once a series of scans are aligned, you can view their individual TruSpaces and also jump between them from within the registered ModelSpace. You can also do basic measurements and extract targets in TruSpaces. To view a scans TruSpace, simply RC on the scan (Scanworld) and select Open TruSpace.

The Hierarchy of Objects in the Cyclone Navigator

Servers contain Databases

Databases contain Projects

Projects contain:

- ModelSpaces
- ScanWorlds
- Registrations
- Images
- Imported Files
- Other (subordinate) Projects

ModelSpaces contain ModelSpace Views

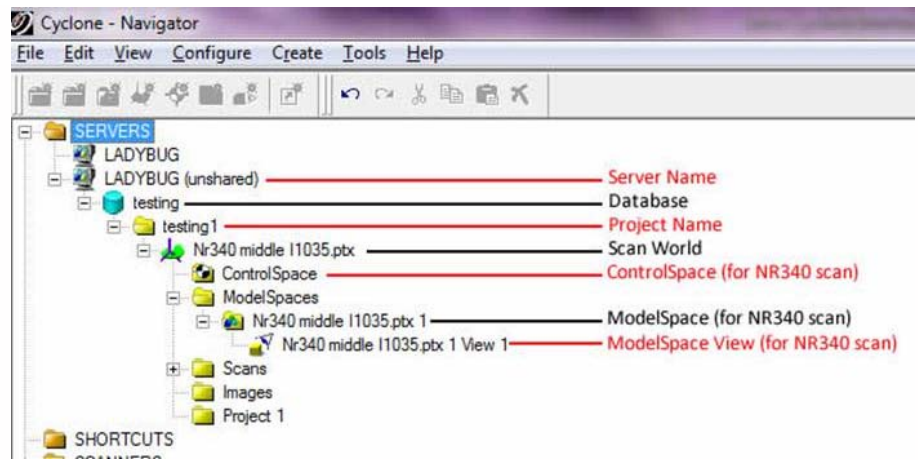


Figure 1: The Cyclone Hierarchy

Setting up a new database/project in Cyclone

1. By default, Cyclone is set up to recognize the machine that you are working on as the default Cyclone server. To add more servers, in the Cyclone Navigator go to Configure – Servers.
2. To set up a new database, select Configure – Databases. Under the Server dropdown select *your_machine_name* (unshared). It is highly recommended that you use the 'Unshared' Server at all times. Using the 'Shared' server requires more time for importing and processing and sometimes causes problems with importing files. You can hide the 'Shared' server by selecting Configure, Server, and un-checking the visibility. For more information on using shared servers, please refer to the Cyclone Help. A database is a container file for all information relevant to a specific project. It is best to create a unique database for each individual project that you may be working on. This facilitates data handling and transferability in the future. The database file is an .imp file that should be stored in a root project directory *where the scan files are also located*. Create and store a new database in your designated project directory.
3. Once a new database has been created for your project, Close the Configure Databases dialog.
4. Now to create a project within the database, select the Database Name in the Cyclone Navigator and select Create – Project . Rename the project folder as necessary.

Importing Data into Cyclone

For details on importing data into Cyclone, see [Leica Cyclone 7.1.1 : Importing Data into Cyclone](#)

Transferring & Optimizing Databases (for shared users or when backing up data)

1. In Cyclone Navigator, RC on database. Optimize. Configure and 'Remove'. **Do not destroy!!! This destroys all files created.**
2. In Windows, copy all files including the Database folder (containing the .impfile, pcesets, eventlog folder, and recovery folder) and the Scan Folder (containing the Stations/scans, the ControlPoints.ini, and the project.ini).
3. In new location, copy and configure the database as usual.
4. Optimizing an old database is necessary when Cyclone is updated with firmware and/or software. To optimize and old database (created before the update), configure in Cyclone navigator, RC and optimize. This is sometimes a lengthy process, but it should update old databases to the current version of Cyclone.

Basic Cyclone Toolbars (in ControlSpace and ModelSpace Viewers)

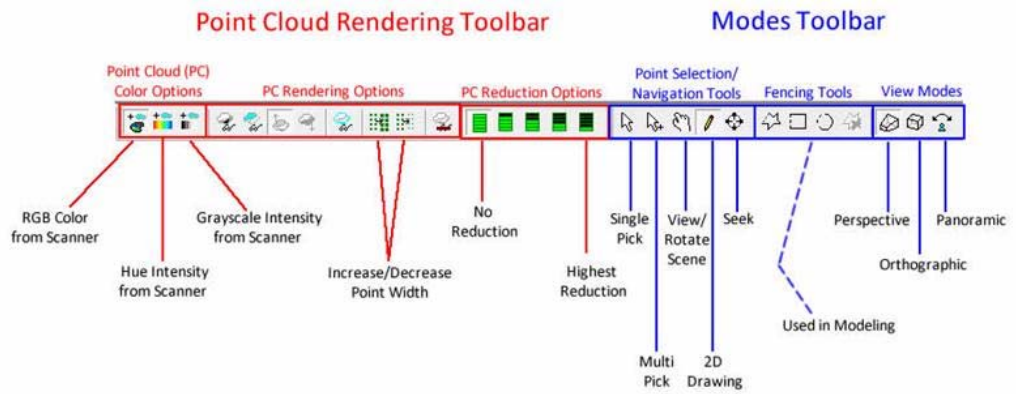
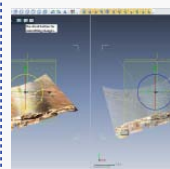


Figure 2: Cyclone Toolbars with common tools

Common Shortcut Keys

S : Seek
~ : Single Pick/Navigate

Shift + ~: Multi Pick Mode
hift + L: Layers List



You are reading the series: [Leica Cyclone 7.1.1 : Suggested Workflow for Data Registration](#)
 Leica Cyclone 7.1.1 : Interface Basics
[Leica Cyclone 7.1.1 : Importing Data into Cyclone](#)
[Leica Cyclone 7.1.1: Registering Scans in Cyclone](#)
[Leica Cyclone 7.1.1: Sub-Dividing Large Point Clouds for Autodesk Applications](#)
[Leica Cyclone 7.1.1: Sub-Dividing Large Point Clouds for Autodesk Applications – Exporting the Data](#)
[Leica Cyclone 7.1.1: Sub-Dividing Large Point Clouds for Autodesk Applications – Final Images from Example](#)

Please cite this document as: Payne, Angie. 2011. Leica Cyclone 7.1.1 : Interface Basics. CAST Technical Publications Series. Number 7566. <http://gmvc.cast.ark.edu/scanning/software/leica-software/leica-cyclone/cyclone-shortcut-guides/leica-cyclone-interface-basics-2-3/>. [Date accessed: 27 April 2013]. [Last Updated: 13 February 2013]. *Disclaimer: All logos and trademarks remain the property of their respective owners.*

Login

[Log in](#)