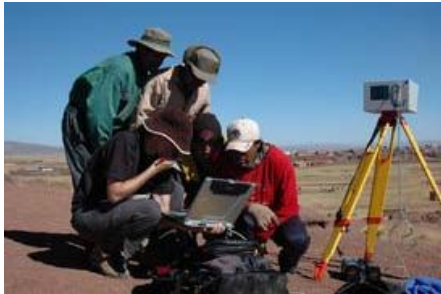


# Geospatial Modeling & Visualization

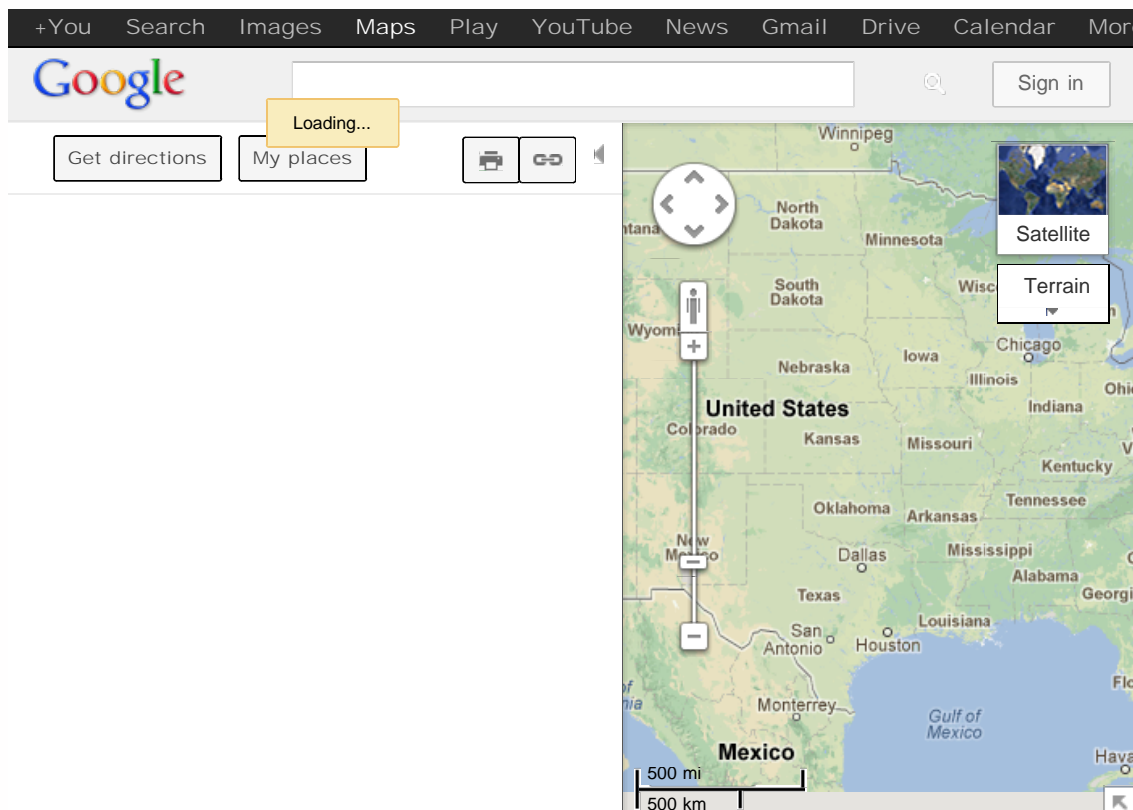
A Method Store for Advanced Survey and Modeling Technologies

GMV Geophysics GPS Modeling Digital Photogrammetry 3D Scanning Equipment Data and Projects by Region

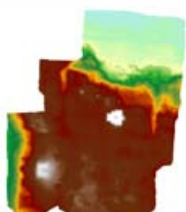
## Tiwanaku, Bolivia



The Center has been involved in a multi-year project in collaboration with Dr. Alexei Vranich at the University of Pennsylvania to scan and document the Pre-Incan site of Tiwanaku, Bolivia. Read a short synopsis of the project at [Tiwanaku Project Details](#) and for full details on the entire survey, refer to [Geophysics and Geomatics at Tiwanaku](#).



View [Tiwanaku, Bolivia](#) in a larger map



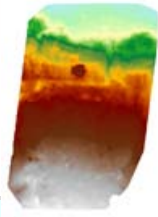
[dem\\_72\\_05m.tif](#)

[dem\\_72\\_05m.tfw](#) (File size – 69 mb) Collected 2006

Photogrammetric processing was performed on 10 historic vertical aerial photographs from 1972 to produce this digital elevation model (DEM) covering the monumental core and surrounding areas of Tiwanaku. Ground sample distance – 0.5-m, Coverage – 330-ha

[dem\\_92\\_1m.tif](#)

[dem\\_92\\_1m.tfw](#) (File size – 26 mb) Collected 2006



Photogrammetric processing was performed on two historic vertical aerial photographs from 1992 to produce this digital elevation model (DEM) covering the monumental core and surrounding areas of Tiwanaku. Ground sample distance - 1-m, Coverage - 550-ha

**Please note.** This data is distributed under a Creative Commons 3.0 License (see <http://creativecommons.org/licenses/by-nc/3.0/> for the full license). You are free to share and remix these data under the condition that you include attribution as provided here. You may not use the data or products in a commercial purpose without additional approvals. Please attach the following credit to all data and products developed there from:

**Credit:**

[Museum of Archeology and Anthropology, General Robotics, Automation, Sensing and Perception \(GRASP\) Lab](#) (University of Pennsylvania) and [Center for Advanced Spatial Technologies](#), (University of Arkansas)

**Longer version:** Data acquired, processed and distributed by the Center for Advanced Spatial Technologies staff and University of Pennsylvania.

Login

[Log in](#)