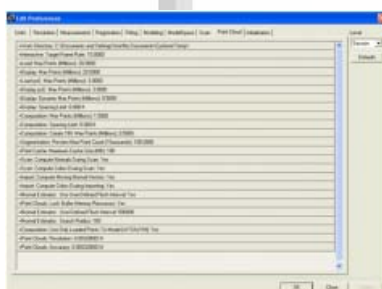
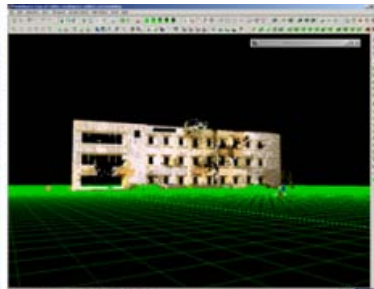
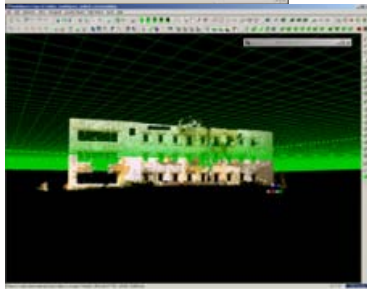
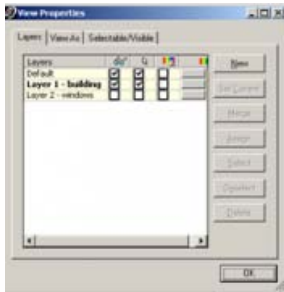


# Geospatial Modeling & Visualization

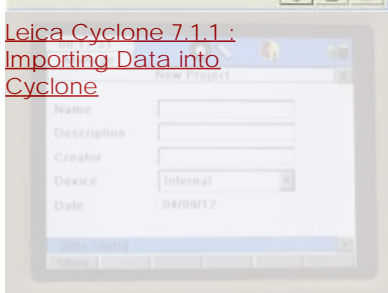
A Method Store for Advanced Survey and Modeling Technologies

GMV Geophysics GPS Modeling Digital Photogrammetry 3D Scanning Equipment Data and Projects by Region

## Category Archives: *Workflows*

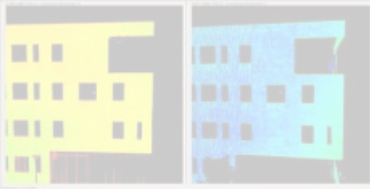


## [Leica Cyclone 7.1.1 : Importing Data into Cyclone](#)





[Leica Cyclone 7.0: Modeling Non-Rectangular Patches](#)



[Leica Cyclone 7.1: Registering Scans in Leica CloudWorx 4.2 and AutoCAD 2012 - Digitizing a Point Cloud in 2D](#)



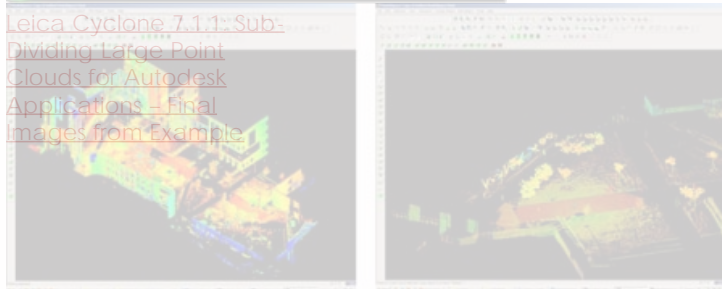
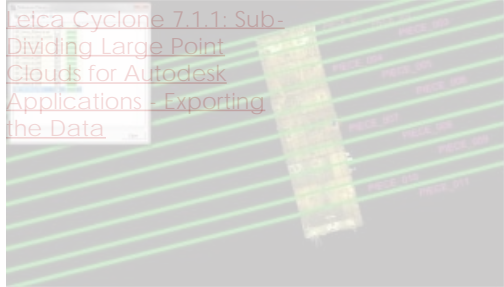
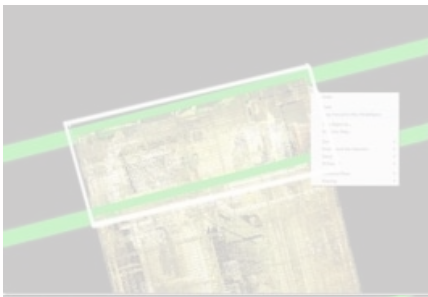
[Using Leica's COE Plug-In in AutoCAD](#)



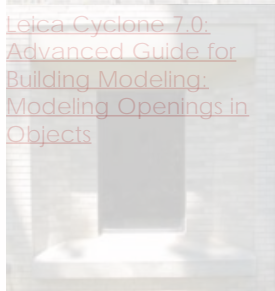
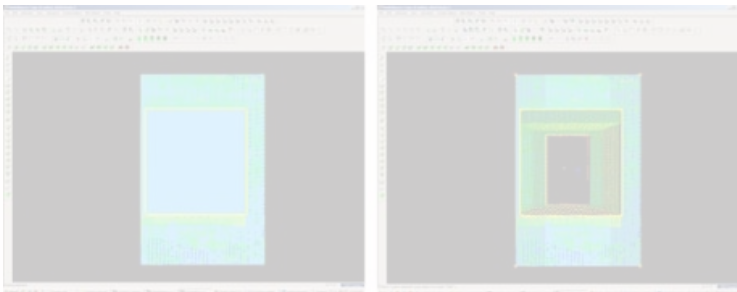
flat1.zfs



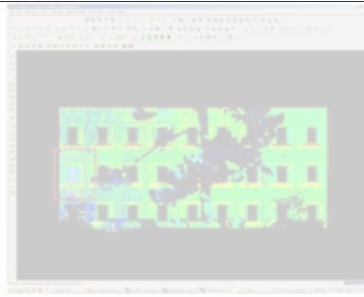
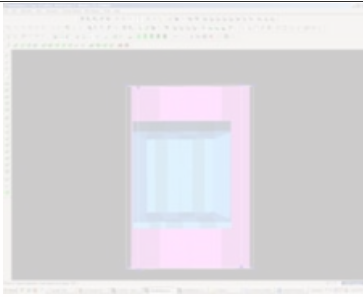
[Leica Cyclone 7.1.1: Sub-Dividing Large Point Clouds for Autodesk Applications](#)



[Leica Cyclone - Creating a Mesh and Modeling Surfaces and Creating Settings Up the Model Space and Break Lines](#)  
[Creating the Topographic Mesh](#)



[Leica Cyclone 7.0: Advanced Guide for Building Modeling: Modeling a Complex Shape](#)



[Leica Cyclone 7.0:](#)

1. [Advanced Guide for](#)
2. [Building Modeling:](#)
3. [Modeling and Placing](#)
4. [Repeating Features](#)
5. 5

Login

[Log in](#)

© 2013 - Geospatial Modeling & Visualization