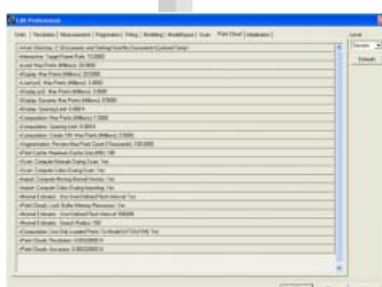
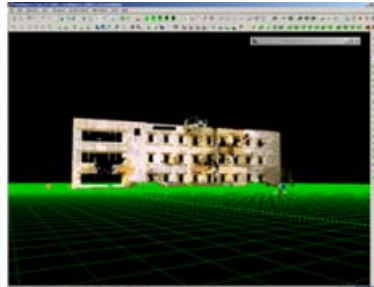
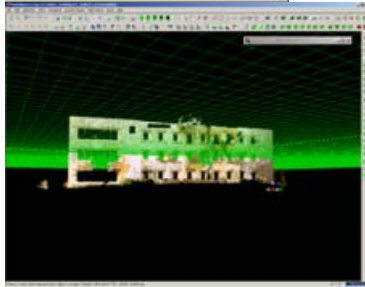


Geospatial Modeling & Visualization

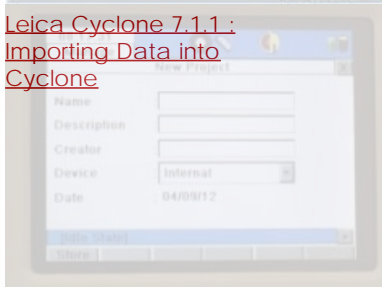
A Method Store for Advanced Survey and Modeling Technologies

GMV Geophysics GPS Modeling Digital Photogrammetry 3D Scanning Equipment Data and Projects by Region

Category Archives: Cyclone



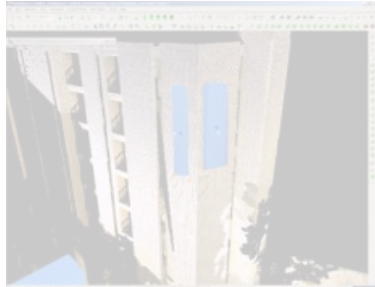
[Leica Cyclone 7.1.1 : Importing Data into Cyclone](#)



[Leica C10: Starting a New Project](#)



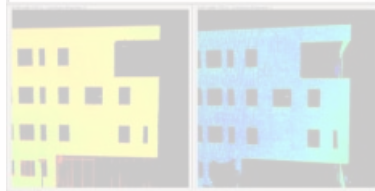
[Leica Cyclone 7.0: Modeling a Flat Surface](#)



[Leica Cyclone 7.0: Modeling - Editing, Extending, and Extruding Rectangular Patches](#)



[Leica Cyclone 7.0: Modeling Non-Rectangular Patches](#)



[Leica Cyclone 7.0: Registering Scans in Leica CloudWorx 4.2 and AutoCAD 2012 - Digitizing a Point Cloud in 2D](#)

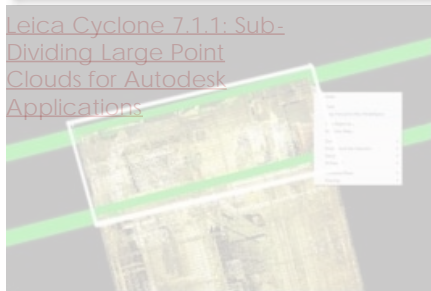


[Using Leica's COE Plug-In in AutoCAD](#)

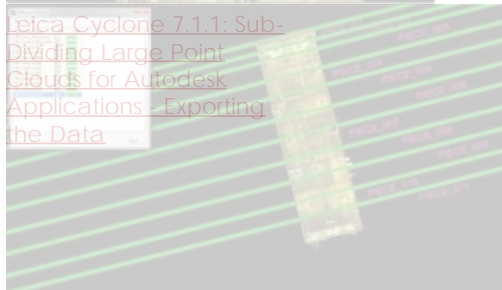
flat1.zfs



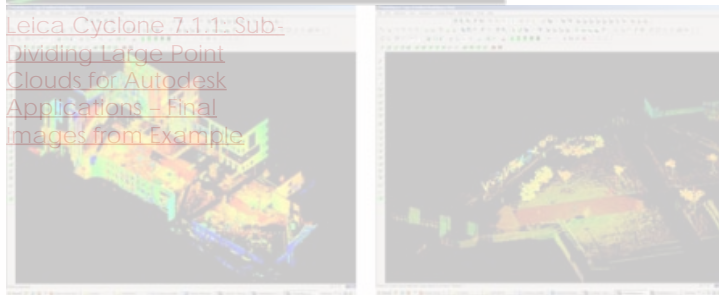
[Instructions for Using Leica's TruView Viewer](#)



[Leica Cyclone 7.1.1: Sub-Dividing Large Point Clouds for Autodesk Applications](#)



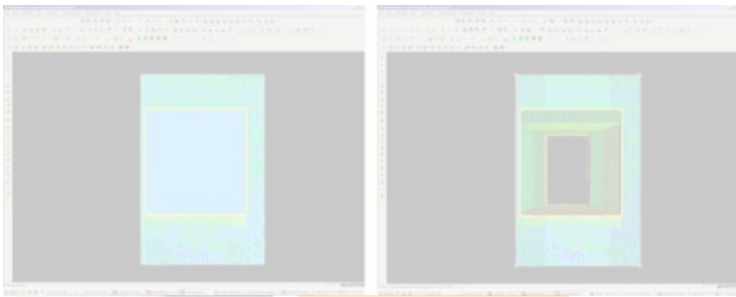
[Leica Cyclone 7.1.1: Sub-Dividing Large Point Clouds for Autodesk Applications - Exporting the Data](#)



[Leica Cyclone 7.1.1: Sub-Dividing Large Point Clouds for Autodesk Applications - Final Images from Example](#)

[Leica Cyclone - Creating a Mesh and Modeling Surface Topography](#)
[Setting Up the Model Space and Rendering Mesh](#)

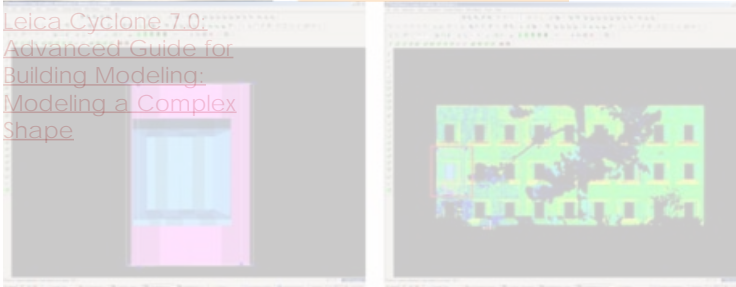




[Leica Cyclone 7.0:
Advanced Guide for
Building Modeling:
Modeling Openings in
Objects](#)



[Leica Cyclone 7.0:
Advanced Guide for
Building Modeling:
Modeling a Complex
Shape](#)



- [Leica Cyclone 7.0:
Advanced Guide for
Building Modeling:
Modeling and Placing
Repeating Features](#)
- 1
 - 2
 - 3
 - 4
 - 5

Login

[Log in](#)