

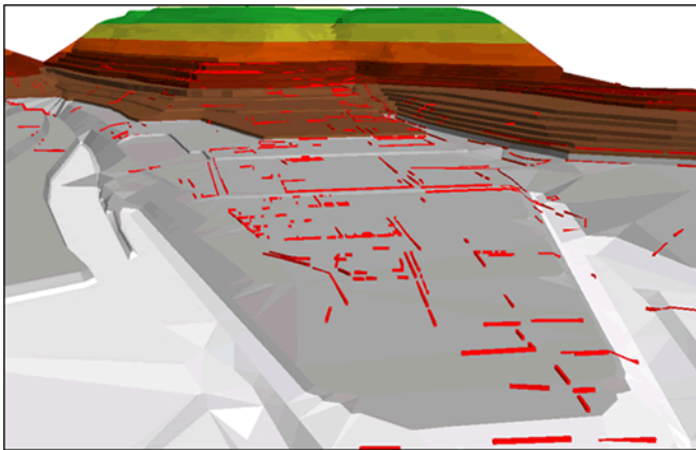
# Geospatial Modeling & Visualization

A Method Store for Advanced Survey and Modeling Technologies

GMV Geophysics GPS Modeling Digital Photogrammetry 3D Scanning Equipment Data and Projects by Region

## Cuzco, Peru – TIN with Overlaid Walls

Data collected in 2009 as part of the [Computer Modeling of Heritage Resources, Peru](#)



[walls.zip](#) (ESRI shapefile, 2MB)

Collected 2009

TIN (Triangulated Irregular Network) with verified walls overlaid in red. The view is from the tail of the puma, toward Sacsaywaman.

**Please note.** This data is distributed under a Creative Commons 3.0 License (see <http://creativecommons.org/licenses/by-nc/3.0/> for the full license). You are free to share and remix these data under the condition that you include attribution as provided here. You may not use the data or products in a commercial purpose without additional approvals. Please attach the following credit to all data and products developed there from:

**Credit:** [Instituto Nacional de Cultura](#), [Center for Advanced Spatial Technologies](#), (University of Arkansas) and [Cotsen Institute for Archaeology](#) (UCLA)

**Longer version:** Data developed under the authority of the [Instituto Nacional de Cultura](#), Vladimir Dávila – Arquitecto del P.A.N Machu Picchu, Director del P.A.N Machu Picchu Direccion Regional de Cultura Cusco and Fernando Astete – National Archaeological Park of Machu Picchu. Data acquired, processed and distributed by the Center for Advanced Spatial Technologies staff (Snow Winters, Malcolm Williamson and Katie Simon) and by students in the 2009 Cotsen Institute for Archaeology (UCLA) Cuzco/Machu Picchu Field School, Alexei Vranich Director.



You are reading the series: [Cuzco GIS/RS](#)  
[Cuzco, Peru – Georeferenced Map from 1978](#)  
Cuzco, Peru – TIN with Overlaid Walls  
[Cuzco, Peru – TIN of Past Terraces](#)  
[Cuzco, Peru – Vector Line Data of Past Terraces](#)

Please cite this document as: Stevens, Caitlin. 2011. Cuzco, Peru – TIN with Overlaid Walls. CAST Technical Publications Series. Number 7383. <http://gmvc.cast.uark.edu/region-data/region/peru/cuzco-peru-tin-with-overlaid-walls-2/>. [Date accessed: 27 April 2013]. [Last Updated: 9 May 2012]. *Disclaimer: All logos and trademarks remain the property of their respective owners.*

**Login**

[Log in](#)

© 2013 - Geospatial Modeling & Visualization