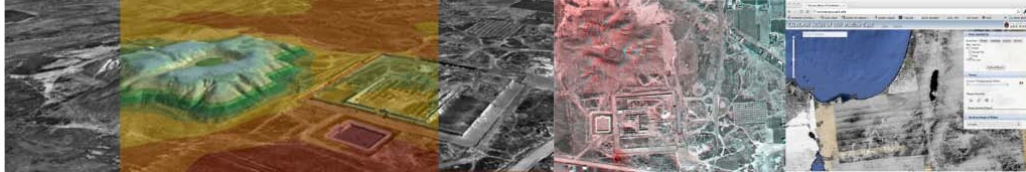


Geospatial Modeling & Visualization

A Method Store for Advanced Survey and Modeling Technologies

GMV Geophysics GPS Modeling Digital Photogrammetry 3D Scanning Equipment Data and Projects by Region

Photogrammetry Data and Projects



Photogrammetric Projects:

CAST has been involved in projects using both traditional, soft copy photogrammetry, and more recent techniques including structure from motion photogrammetry.

Check out some of CAST's photogrammetric projects, [linked here](#).

Photogrammetric Data Sets:

Photogrammetric data sets are provided here for public use. Use of these data sets, under the creative commons license, is intended to introduce the concepts of photogrammetry and the data produced from photogrammetric processes, and to allow users to become familiar with the software covered on this site. Data sets are provided for close-range (UofA campus) as well as digital and historic aerial projects (UofA campus, Tiwanaku). See the individual project pages below for more information on each data set.

Photogrammetric Data Sets Available:

[University of Arkansas, Fayetteville](#)

Includes digital aerial imagery for the UofA campus and close-range stereo images for the UofA Senior Walk.

[Tiwanaku, Bolivia](#)

Historic aerial photography for the Tiwanaku ceremonial core.

[Saqsaywaman, Peru](#)

An example of low resolution, oblique aerial photography over a well known archaeological site near Cusco, Peru.

[Knowth, Brú na Bóinne, Ireland](#)

An example of rapid, close-range photogrammetry on a well known archaeological site.

[Gabii Project, Italy](#)

An example of close-range photogrammetry used to document archaeological excavations.

