

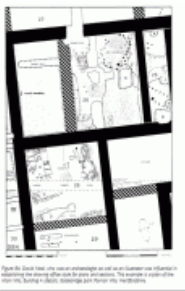
Geospatial Modeling & Visualization

A Method Store for Advanced Survey and Modeling Technologies

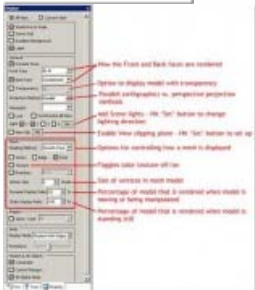
GMV Geophysics GPS Modeling Digital Photogrammetry 3D Scanning Equipment Data and Projects by Region

Category Archives: Workflow

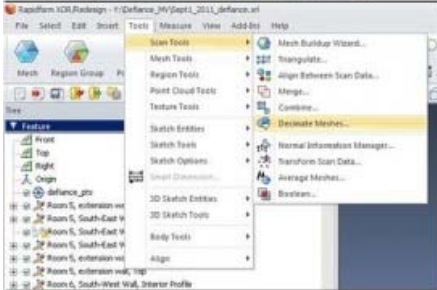
This category contains workflows for RapidForm XOR.



Point-to-Space tool, use scan intelligence as well as distance information to generate the mesh for the scan data. The scan is used to create the mesh, which is then used to generate the model.



ing
a:



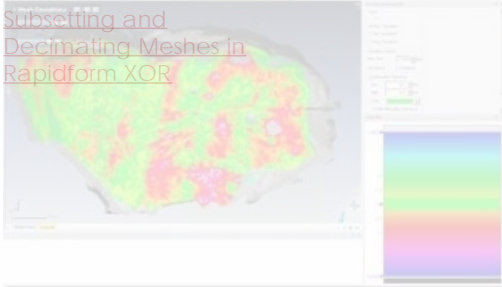
[Working with terrestrial scan or photogrammetrically derived meshes in ArcGIS.](#)

Split

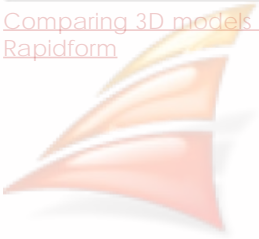
- Split a mesh into multiple parts by various methods



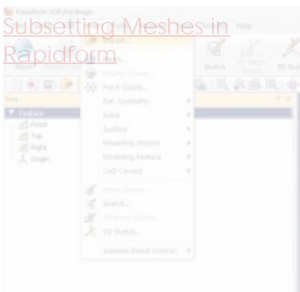
Subsetting and Decimating Meshes in Rapidform XOR



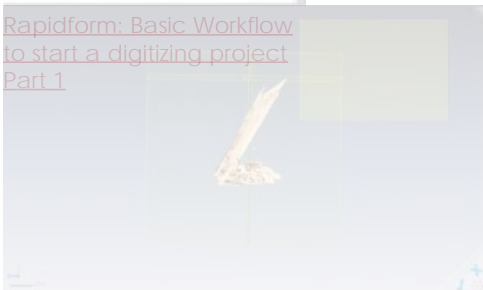
Comparing 3D models in Rapidform



Subsetting Meshes in Rapidform



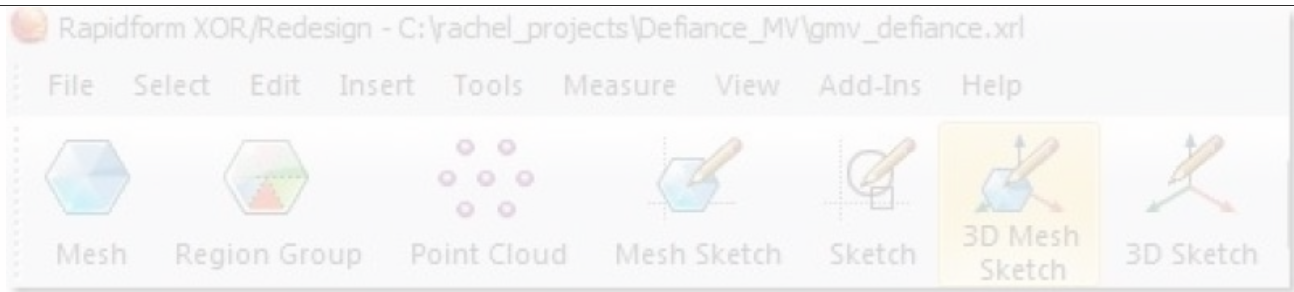
Rapidform: Basic Workflow to start a digitizing project Part 1



Rapidform: Basic Workflow to start a digitizing project Part 2



Rapidform: Mesh Cleaning



[Rapidform: Digitizing Using the Pencil Tool](#)



[Rapidform: Digitizing Using the Spline Tool](#)

1. 1
2. 2
3. 3

[Login](#)

[Log in](#)