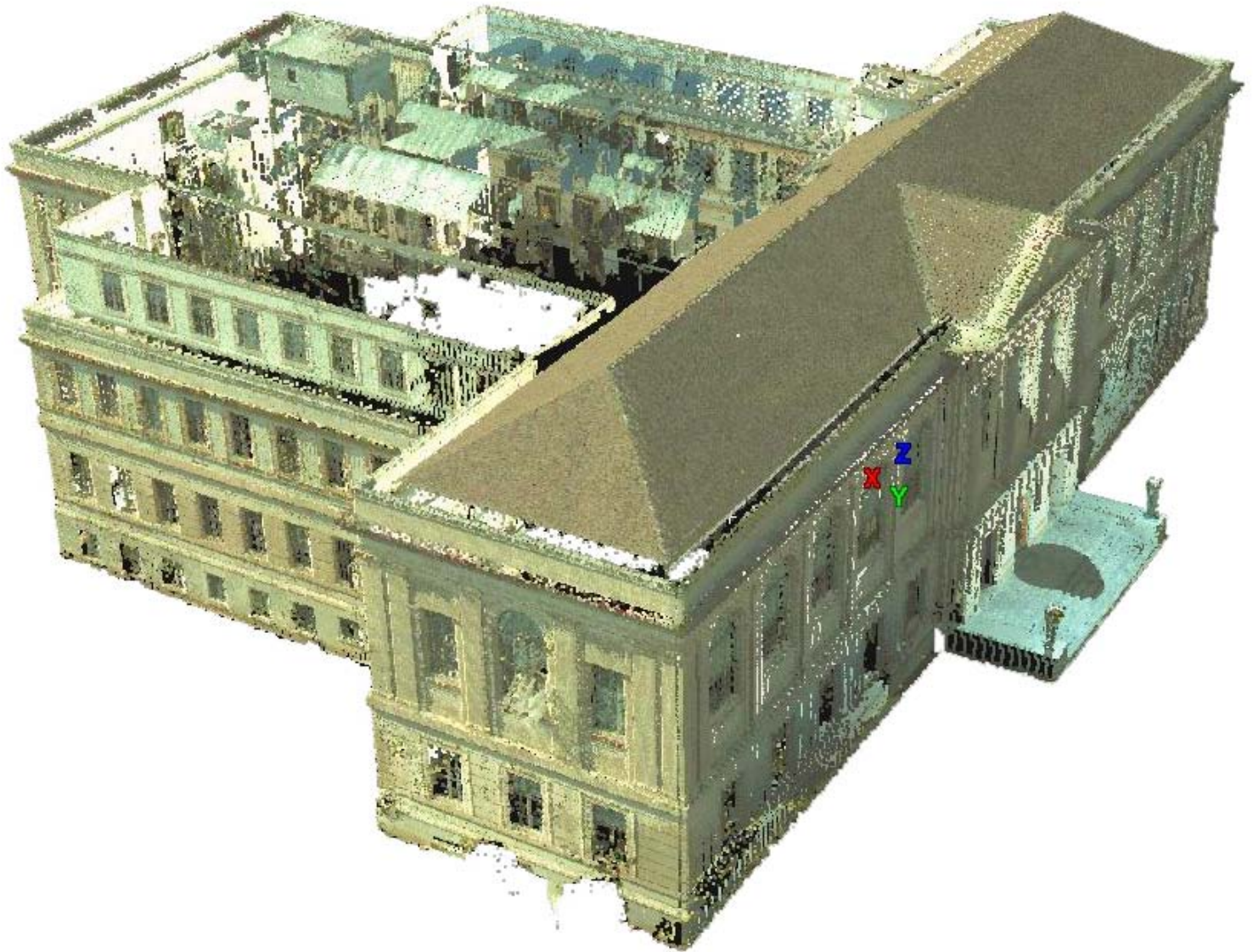


<http://gmvc.cast.uark.edu> A Method Store for Advanced Survey and Modeling Technologies Mon, 01 Apr 2013 03:29:18 +0000 en-US hourly 1 <http://wordpress.org/?v=3.5.1> <http://gmvc.cast.uark.edu/region-data/region/united-states/university-of-arkansas-vol-walker-building-exterior-2/> <http://gmvc.cast.uark.edu/region-data/region/united-states/university-of-arkansas-vol-walker-building-exterior-2/#comments> Wed, 28 Mar 2012 17:49:15 +0000 caitlin <http://gmvc.cast.uark.edu/?p=5618> [Continue reading →](#)]]>

Working with the University of Arkansas' Facilities Management and Planning Departments, CAST is documenting the historical Vol Walker Building and its renovation. Here are merged scans of the exterior of the building which were collected with the Leica C10 Scan Station scanner. The project includes multiple floors within the building interior as well as the building exterior. Exterior scans were collected with a point spacing of approximately 5-10 cm. The data sets have been separated due to file size and data density. Interior scans were collected with a point spacing that ranged from less than a centimeter at the most dense (at a range of < 1 meter) to approximately 5 cm at the least dense (at a range of 25 meters). These scans were then reduced to a more consistent point spacing of 1 cm for potential future use in historical preservation documentation.



[Vol_Walker_Building_Exterior.zip](#) (41.9 mb) (7.5 cm spacing in .pts file format)

[Sitemap_Vol_Walker_Exterior.htm](#) -Explore the data set in Leica TruView, which requires Leica [TruView free viewer](#) and Internet Explorer. For instructions on using the free TruView data viewer and for a complete list of links to the TruView data related to this project, please see: [Accessing Vol Walker Interior TruViews](#).

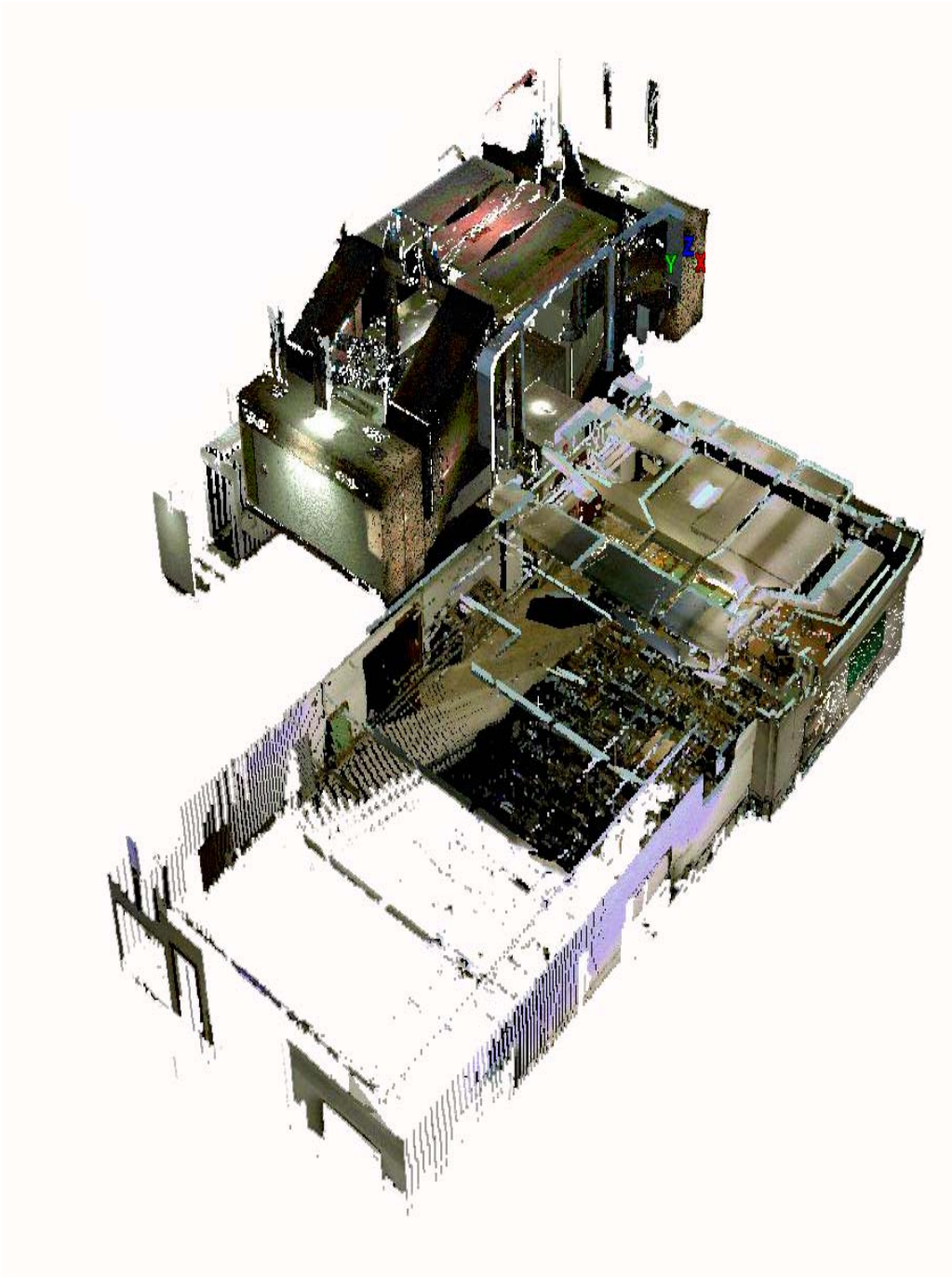
Please note. This data is distributed under a Creative Commons 3.0 License (see <http://creativecommons.org/licenses/by-nc/3.0/> for the full license). You are free to share and remix these data under the condition that you include attribution as provided here. You may not use the data or products in a commercial purpose without additional approvals. Please attach the following credit to all data and products developed there from:

Credits:

Data was collected in collaboration with University of Arkansas Facilities Management, Operations and Maintenance and Campus Planning Divisions with outstanding assistance from Bob Harris, Construction Coordinator.

]]> <http://gmvc.cast.uark.edu/region-data/region/united-states/university-of-arkansas-vol-walker-building-exterior-2/feed/> 0
<http://gmvc.cast.uark.edu/scanning/university-of-arkansas-vol-walker-building-interior-basement-level-3/>
<http://gmvc.cast.uark.edu/scanning/university-of-arkansas-vol-walker-building-interior-basement-level-3/#comments> Wed, 28 Mar 2012 17:32:28 +0000 caitlin 5 meters]]> <http://gmvc.cast.uark.edu/?p=5603> [Continue reading →](#)]]>

Working with the University of Arkansas' Facilities Management and Planning Departments, CAST is documenting the historical Vol Walker Building and its renovation. Here are merged scans of the basement or ground floor of the interior, which were collected with the Z+F 5005i Scanner. The project includes multiple floors within the building interior as well as the building exterior. Interior scans were collected with a point spacing that ranged from less than a centimeter at the most dense (at a range of < 1 meter) to approximately 5 cm at the least dense (at a range of 25 meters). These scans were then reduced to a more consistent point spacing of 1 cm for potential future use in historical preservation documentation. Exterior scans were collected with a point spacing of approximately 5-10 cm. The data sets have been separated due to file size and data density.



[Vol Walker Building Interior Basement.zip](#) (4.4 mb) (1 cm spacing in .pts file format)

[Sitemap Vol Walker Basement.htm](#) -Explore the data set in Leica TruView, which requires Leica [TruView free viewer](#) and Internet Explorer. For instructions on using the free TruView data viewer and for a complete list of links to the TruView data related to this project, please see: [Accessing Vol Walker Interior TruViews](#).

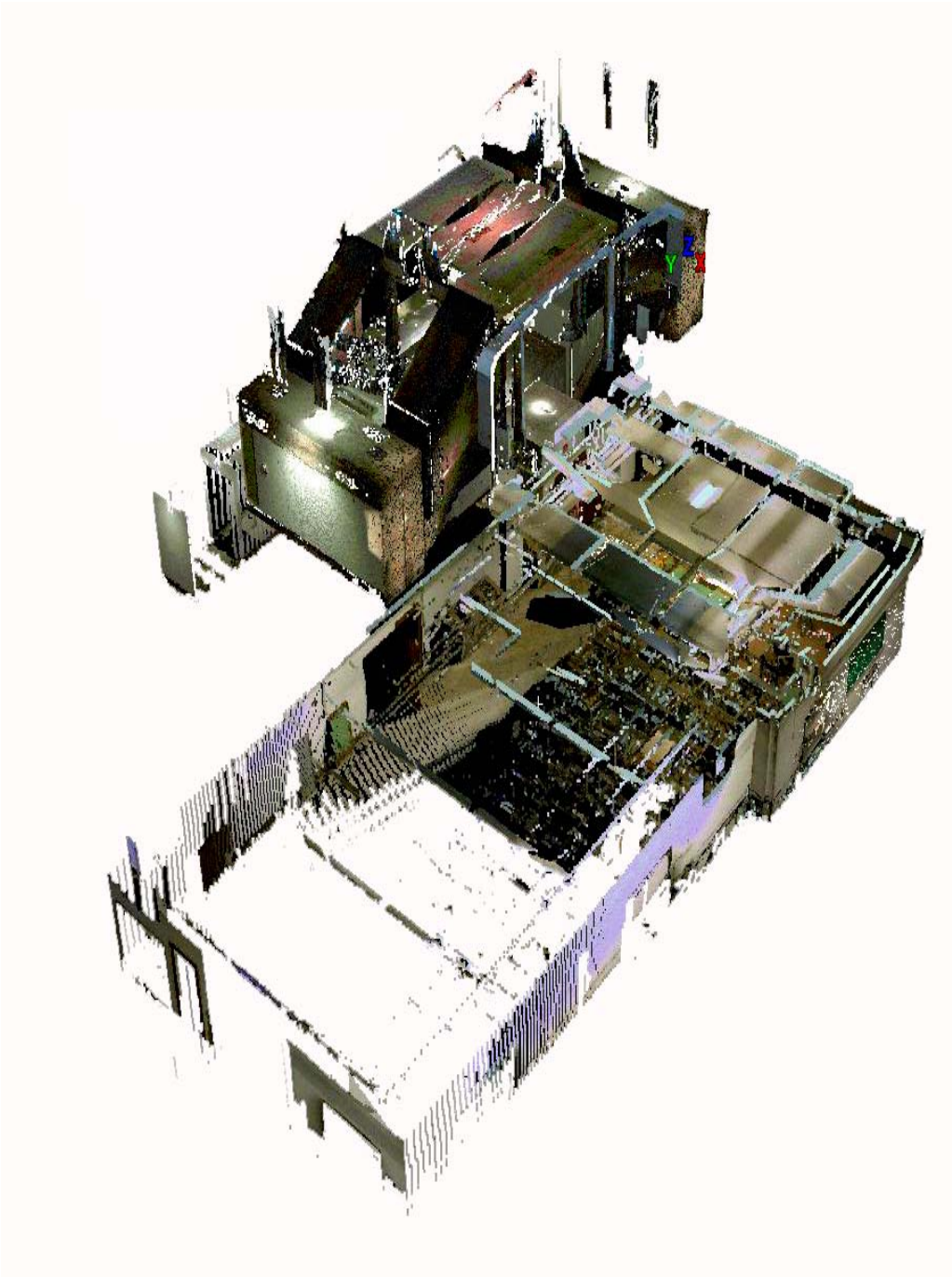
Please note. This data is distributed under a Creative Commons 3.0 License (see <http://creativecommons.org/licenses/by-nc/3.0/> for the full license). You are free to share and remix these data under the condition that you include attribution as provided here. You may not use the data or products in a commercial purpose without additional approvals. Please attach the following credit to all data and products developed there from:

Credits:

Data was collected in collaboration with University of Arkansas Facilities Management, Operations and Maintenance and Campus Planning Divisions with outstanding assistance from Bob Harris, Construction Coordinator.

]]> <http://gmvcast.uark.edu/scanning/university-of-arkansas-vol-walker-building-interior-basement-level-3/feed/> 0
<http://gmvcast.uark.edu/region-data/region/united-states/university-of-arkansas-vol-walker-building-interior-basement-level-2/>
<http://gmvcast.uark.edu/region-data/region/united-states/university-of-arkansas-vol-walker-building-interior-basement-level-2/#comments> Wed, 28 Mar 2012 17:32:28 +0000 caitlin <http://gmvcast.uark.edu/?p=5603> [Continue reading →](#)]]>

Working with the University of Arkansas' Facilities Management and Planning Departments, CAST is documenting the historical Vol Walker Building and its renovation. Here are merged scans of the basement or ground floor of the interior, which were collected with the Z+F 5005i Scanner. The project includes multiple floors within the building interior as well as the building exterior. Interior scans were collected with a point spacing that ranged from less than a centimeter at the most dense (at a range of < 1 meter) to approximately 5 cm at the least dense (at a range of 25 meters). These scans were then reduced to a more consistent point spacing of 1 cm for potential future use in historical preservation documentation. Exterior scans were collected with a point spacing of approximately 5-10 cm. The data sets have been separated due to file size and data density.



[Vol Walker Building Interior Basement.zip](#) (4.4 mb) (1 cm spacing in .pts file format)

[Sitemap Vol Walker Basement.htm](#) -Explore the data set in Leica TruView, which requires Leica [TruView free viewer](#) and Internet Explorer. For instructions on using the free TruView data viewer and for a complete list of links to the TruView data related to this project, please see: [Accessing Vol Walker Interior TruViews](#).

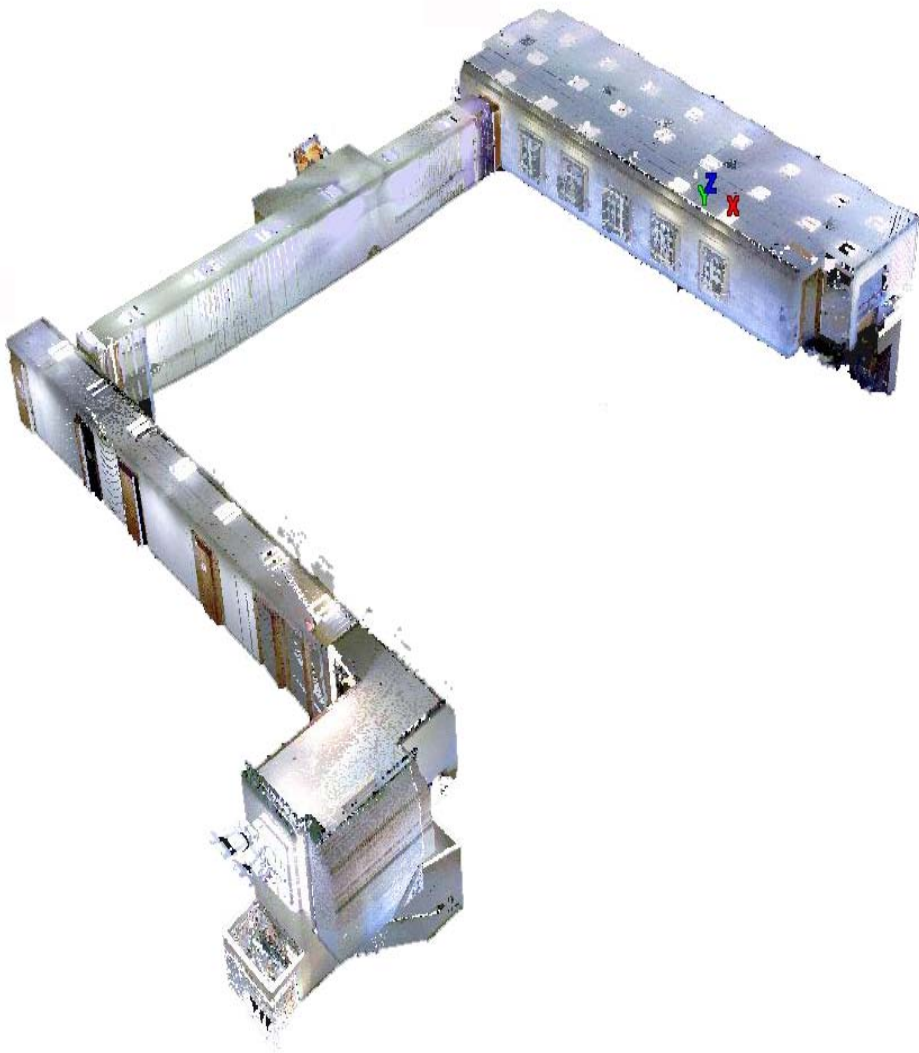
Please note. This data is distributed under a Creative Commons 3.0 License (see <http://creativecommons.org/licenses/by-nc/3.0/> for the full license). You are free to share and remix these data under the condition that you include attribution as provided here. You may not use the data or products in a commercial purpose without additional approvals. Please attach the following credit to all data and products developed there from:

Credits:

Data was collected in collaboration with University of Arkansas Facilities Management, Operations and Maintenance and Campus Planning Divisions with outstanding assistance from Bob Harris, Construction Coordinator.

]]> <http://gmvcast.uark.edu/region-data/region/united-states/university-of-arkansas-vol-walker-building-interior-basement-level-2/feed/> 0 <http://gmvcast.uark.edu/region-data/region/united-states/university-of-arkansas-vol-walker-building-interior-floor-3-2/> <http://gmvcast.uark.edu/region-data/region/united-states/university-of-arkansas-vol-walker-building-interior-floor-3-2/#comments>
Wed, 28 Mar 2012 17:25:57 +0000 caitlin <http://gmvcast.uark.edu/?p=5600> [Continue reading →](#)]]>

Working with the University of Arkansas' Facilities Management and Planning Departments, CAST is documenting the historical Vol Walker Building and its renovation. Here are merged scans of the third floor of the interior, which were collected with the Z+F 5005i Scanner. The project includes multiple floors within the building interior as well as the building exterior. Interior scans were collected with a point spacing that ranged from less than a centimeter at the most dense (at a range of < 1 meter) to approximately 5 cm at the least dense (at a range of 25 meters). These scans were then reduced to a more consistent point spacing of 1 cm for potential future use in historical preservation documentation. Exterior scans were collected with a point spacing of approximately 5-10 cm. The data sets have been separated due to file size and data density.



[Sitemap_Vol_Walker_Floor_3.htm](#) -Explore the data set in Leica TruView, which requires Leica [TruView free viewer](#) and Internet Explorer. For instructions on using the free TruView data viewer and for a complete list of links to the TruView data related to this project, please see: [Accessing Vol Walker Interior TruViews](#).

Please note. This data is distributed under a Creative Commons 3.0 License (see <http://creativecommons.org/licenses/by-nc/3.0/> for the full license). You are free to share and remix these data under the condition that you include attribution as provided here. You may not use the data or products in a commercial purpose without additional approvals. Please attach the following credit to all data and products developed there from:

Credits:

Data was collected in collaboration with University of Arkansas Facilities Management, Operations and Maintenance and Campus Planning Divisions with outstanding assistance from Bob Harris, Construction Coordinator.

]]> <http://gmv.cast.uark.edu/region-data/region/united-states/university-of-arkansas-vol-walker-building-interior-floor-3-2/feed/0>
<http://gmv.cast.uark.edu/region-data/region/united-states/university-of-arkansas-vol-walker-building-interior-floor-2-2/>
<http://gmv.cast.uark.edu/region-data/region/united-states/university-of-arkansas-vol-walker-building-interior-floor-2-2/#comments>
Tue, 30 Aug 2011 00:50:10 +0000 caitlin <http://gmv.cast.uark.edu/?p=3634> [Continue reading →](#)]]>

Working with the University of Arkansas' Facilities Management and Planning Departments, CAST is documenting the historical Vol Walker Building and its renovation. Here are merged scans of the second floor of the interior, which were collected with the [Z+F 5005i Scanner](#). The project includes multiple floors within the building interior as well as the building exterior. Interior scans were collected with a point spacing that ranged from less than a centimeter at the most dense (at a range of < 1 meter) to approximately 5 cm at the least dense (at a range of 25 meters). These scans were then reduced to a more consistent point spacing of 1 cm for potential future use in historical preservation documentation. Exterior scans were collected with a point spacing of approximately 5-10 cm. The data sets have been separated due to file size and data density.



[Vol_Walker_Building_Interior_Floor_2.zip](#) (2.81 gb) (1 cm spacing in .pts file format)

[Sitemap_Vol_Walker_Floor_2.htm](#) -Explore the data set in Leica TruView, which requires Leica [TruView free viewer](#) and Internet Explorer. For instructions on using the free TruView data viewer and for a complete list of links to the TruView data related to this project, please see: [Accessing Vol Walker Interior TruViews](#).

Please note. This data is distributed under a Creative Commons 3.0 License (see <http://creativecommons.org/licenses/by-nc/3.0/>

for the full license). You are free to share and remix these data under the condition that you include attribution as provided here. You may not use the data or products in a commercial purpose without additional approvals. Please attach the following credit to all data and products developed there from:

Credits:

Data was collected in collaboration with University of Arkansas Facilities Management, Operations and Maintenance and Campus Planning Divisions with outstanding assistance from Bob Harris, Construction Coordinator.

]]> <http://gmvc.cast.uark.edu/region-data/region/united-states/university-of-arkansas-vol-walker-building-interior-floor-2-2/feed/0>
<http://gmvc.cast.uark.edu/region-data/region/united-states/university-of-arkansas-vol-walker-building-interior-floor-1-2/>
<http://gmvc.cast.uark.edu/region-data/region/united-states/university-of-arkansas-vol-walker-building-interior-floor-1-2/#comments>
Tue, 30 Aug 2011 00:15:53 +0000 caitlin <http://gmvc.cast.uark.edu/?p=3626> [Continue reading →](#)]]>

Working with the University of Arkansas' Facilities Management and Planning Departments, CAST is documenting the historical Vol Walker Building and its renovation. Here are merged scans of the first floor of the interior, which were collected with the [Z+F 5005i Scanner](#). The project includes multiple floors within the building interior as well as the building exterior. Interior scans were collected with a point spacing that ranged from less than a centimeter at the most dense (at a range of < 1 meter) to approximately 5 cm at the least dense (at a range of 25 meters). These scans were then reduced to a more consistent point spacing of 1 cm for potential future use in historical preservation documentation. Exterior scans were collected with a point spacing of approximately 5-10 cm. The data sets have been separated due to file size and data density.



[Vol_Walker_Building_Interior_Floor_1.zip](#) (2 gb) (1 cm spacing in .pts file format)

[Sitemap_Vol_Walker_Floor_1.htm](#) -Explore the data set in Leica TruView, which requires Leica [TruView free viewer](#) and Internet

Explorer. For instructions on using the free TruView data viewer and for a complete list of links to the TruView data related to this project, please see: [Accessing Vol Walker Interior TruViews](#).

Please note. This data is distributed under a Creative Commons 3.0 License (see <http://creativecommons.org/licenses/by-nc/3.0/> for the full license). You are free to share and remix these data under the condition that you include attribution as provided here. You may not use the data or products in a commercial purpose without additional approvals. Please attach the following credit to all data and products developed there from:

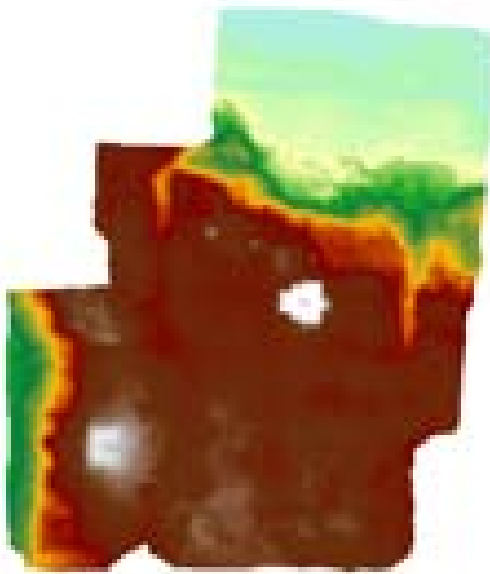
Credits:

Data was collected in collaboration with University of Arkansas Facilities Management, Operations and Maintenance and Campus Planning Divisions with outstanding assistance from Bob Harris, Construction Coordinator.

]]> <http://gmvc.cast.uark.edu/region-data/region/united-states/university-of-arkansas-vol-walker-building-interior-floor-1-2/feed/> 0
<http://gmvc.cast.uark.edu/scanning/tiwanaku-boliviadem-2/> <http://gmvc.cast.uark.edu/scanning/tiwanaku-boliviadem-2/#comments> Fri, 17 Jun 2011 21:49:48 +0000 caitlin <http://gmvc.cast.uark.edu/?p=3494> [Continue reading →](#)]]>

The Center has been involved in a multi-year project in collaboration with Dr. Alexei Vranich at the University of Pennsylvania to scan and document the Pre-Incan site of Tiwanaku, Bolivia. Read a short synopsis of the project at [Tiwanaku Project Details](#) and for full details on the entire survey, refer to [Geophysics and Geomatics at Tiwanaku](#).

For the .jpg, .tif, or .img photogrammetry formats, we recommend the free viewer [ArcGIS Explorer Desktop](#). This free GIS application provides ways to explore and share GIS data.



[dem_1972_1m.tif](#) (File size 71 mb)

Photogrammetric processing was performed on 10 historic vertical aerial photographs from 1972 to produce this digital elevation model (DEM) covering the monumental core and surrounding areas of Tiwanaku.

Ground sample distance 0.5-m

Coverage 330-ha

Coordinate system Arbitrary, based on local coordinate system used by archaeologists.

Please note. This data is distributed under a Creative Commons 3.0 License (see <http://creativecommons.org/licenses/by-nc/3.0/> for the full license). You are free to share and remix these data under the condition that you include attribution as provided here. You may not use the data or products in a commercial purpose without additional approvals. Please attach the following credit to all data and products developed there from:

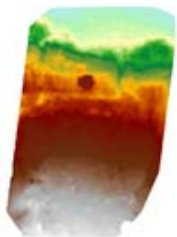
Credit: [Museum of Archeology and Anthropology](#), [General Robotics, Automation, Sensing and Perception \(GRASP\) Lab](#) (University of Pennsylvania) and [Center for Advanced Spatial Technologies](#), (University of Arkansas)

Longer version: Data acquired, processed and distributed by the Center for Advanced Spatial Technologies staff and University of Pennsylvania.

]]> <http://gmvc.cast.uark.edu/scanning/tiwanaku-boliviadem-2/feed/> 0 <http://gmvc.cast.uark.edu/scanning/tiwanaku-bolivia-digital-elevation-model-1992-2/> <http://gmvc.cast.uark.edu/scanning/tiwanaku-bolivia-digital-elevation-model-1992-2/#comments> Fri, 17 Jun 2011 18:31:42 +0000 adam <http://gmvc.cast.uark.edu/?p=3469> [Continue reading →](#)]]>

The Center has been involved in a multi-year project in collaboration with Dr. Alexei Vranich at the University of Pennsylvania to scan and document the Pre-Incan site of Tiwanaku, Bolivia. Read a short synopsis of the project at [Tiwanaku Project Details](#) and for full details on the entire survey, refer to [Geophysics and Geomatics at Tiwanaku](#).

For the .jpg, .tif, or .img photogrammetry formats, we recommend the free viewer [ArcGIS Explorer Desktop](#). This free GIS application provides ways to explore and share GIS data.



[dem_1992_1m.tif](#) (File size 26 mb)

Photogrammetric processing was performed on two historic vertical aerial photographs from 1992 to produce this digital elevation model (DEM) covering the monumental core and surrounding areas of Tiwanaku.

Ground sample distance 1-m

Coverage 550-ha

Coordinate system Arbitrary, based on local coordinate system used by archaeologists.

Please note. This data is distributed under a Creative Commons 3.0 License (see <http://creativecommons.org/licenses/by-nc/3.0/> for the full license). You are free to share and remix these data under the condition that you include attribution as provided here. You may not use the data or products in a commercial purpose without additional approvals. Please attach the following credit to all data and products developed there from:

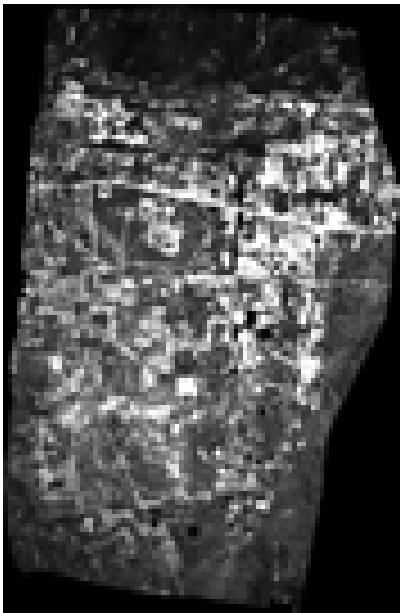
Credit: [Museum of Archeology and Anthropology](#), [General Robotics, Automation, Sensing and Perception \(GRASP\) Lab](#) (University of Pennsylvania) and [Center for Advanced Spatial Technologies](#), (University of Arkansas)

Longer version: Data acquired, processed and distributed by the Center for Advanced Spatial Technologies staff and University of Pennsylvania.

]]> <http://gmvc.cast.uark.edu/scanning/tiwanaku-bolivia-digital-elevation-model-1992-2/feed/> 0 <http://gmvc.cast.uark.edu/scanning/tiwanaku-bolivia-photogrammetry-of-area-in-1992-2/> <http://gmvc.cast.uark.edu/scanning/tiwanaku-bolivia-photogrammetry-of-area-in-1992-2/#comments> Tue, 14 Jun 2011 18:17:15 +0000 caitlin <http://gmvc.cast.uark.edu/?p=3348> [Continue reading →](#)]]>

The Center has been involved in a multi-year project in collaboration with Dr. Alexei Vranich at the University of Pennsylvania to scan and document the Pre-Incan site of Tiwanaku, Bolivia. Read a short synopsis of the project at [Tiwanaku Project Details](#) and for full details on the entire survey, refer to [Geophysics and Geomatics at Tiwanaku](#).

For the .jpg, .tif, or .img photogrammetry formats, we recommend the free viewer [ArcGIS Explorer Desktop](#). This free GIS application provides ways to explore and share GIS data.



[ortho_1992.tif](#) (File size – 125 mb)

Photogrammetric processing was performed on two historic vertical aerial photographs from 1992 to produce this ortho mosaic covering the monumental core and surrounding areas of Tiwanaku.

Ground sample distance – 20.4-cm

Coverage – 710-ha

Coordinate system – Arbitrary, based on local coordinate system used by archaeologists.

	Average Scale	Average Flying Height (m)	Ground Coverage per Pixel (cm)
1992 Photos	1:16 100	2470	20.4

Please note. This data is distributed under a Creative Commons 3.0 License (see <http://creativecommons.org/licenses/by-nc/3.0/> for the full license). You are free to share and remix these data under the condition that you include attribution as provided here. You may not use the data or products in a commercial purpose without additional approvals. Please attach the following credit to all data and products developed there from:

Credit: [Museum of Archeology and Anthropology](#), [General Robotics, Automation, Sensing and Perception \(GRASP\) Lab](#) (University of Pennsylvania) and [Center for Advanced Spatial Technologies](#), (University of Arkansas)

Longer version: Data acquired, processed and distributed by the Center for Advanced Spatial Technologies staff and University of Pennsylvania.

]]> <http://gmvc.cast.uark.edu/scanning/tiwanaku-bolivia-photogrammetry-of-area-in-1992-2/feed/> 0

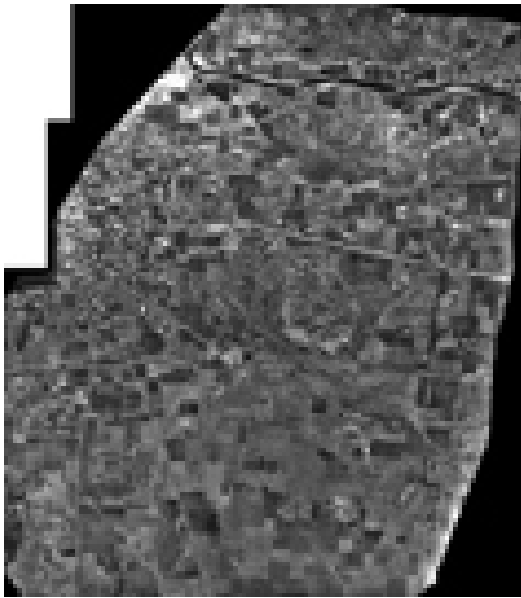
<http://gmvc.cast.uark.edu/scanning/tiwanaku-bolivia-photogrammetry-of-area-in-1972-2/>

<http://gmvc.cast.uark.edu/scanning/tiwanaku-bolivia-photogrammetry-of-area-in-1972-2/#comments> Tue, 14 Jun 2011 18:13:40

+0000 caitlin <http://gmvc.cast.uark.edu/?p=3343> [Continue reading →](#)]]>

The Center has been involved in a multi-year project in collaboration with Dr. Alexei Vranich at the University of Pennsylvania to scan and document the Pre-Incan site of Tiwanaku, Bolivia.Â Read a short synopsis of the project atÂ [Tiwanaku Project Details](#) and for full details on the entire survey, refer toÂ [Geophysics and Geomatics at Tiwanaku](#).

For the .jpg, .tif, or .img photogrammetry formats, we recommend the free viewer [ArcGIS Explorer Desktop](#). This free GIS application provides ways to explore and share GIS data.



[ortho_1972.tif](#) (File size – 745 mb)

Photogrammetric processing was performed on 10 historic vertical aerial photographs from 1972 to produce this ortho mosaic covering the monumental core and surrounding areas of Tiwanaku.

Ground sample distance – 6.5-cm

Coverage – 360-ha

Coordinate system – Arbitrary, based on local coordinate system used by archaeologists.

	Average Scale	Average Flying Height (m)	Ground Coverage per Pixel (cm)
1972 Photos	1:5 150	782	6.5

Please note. This data is distributed under a Creative Commons 3.0 License (see <http://creativecommons.org/licenses/by-nc/3.0/> for the full license). You are free to share and remix these data under the condition that you include attribution as provided here. You may not use the data or products in a commercial purpose without additional approvals. Please attach the following credit to all data and products developed there from:

Credit: [Museum of Archeology and Anthropology](#), [General Robotics, Automation, Sensing and Perception \(GRASP\) Lab](#) (University of Pennsylvania) and [Center for Advanced Spatial Technologies](#), (University of Arkansas)

Longer version: Data acquired, processed and distributed by the Center for Advanced Spatial Technologies staff and University of Pennsylvania.

]]> <http://gmvc.cast.uark.edu/scanning/tiwanaku-bolivia-photogrammetry-of-area-in-1972-2/feed/> 0