

Geospatial Modeling & Visualization

A Method Store for Advanced Survey and Modeling Technologies

[GMV](#) [Geophysics](#) [GPS](#) [Modeling](#) [Digital Photogrammetry](#) [3D Scanning](#) [Equipment](#) [Data and Projects by Region](#)

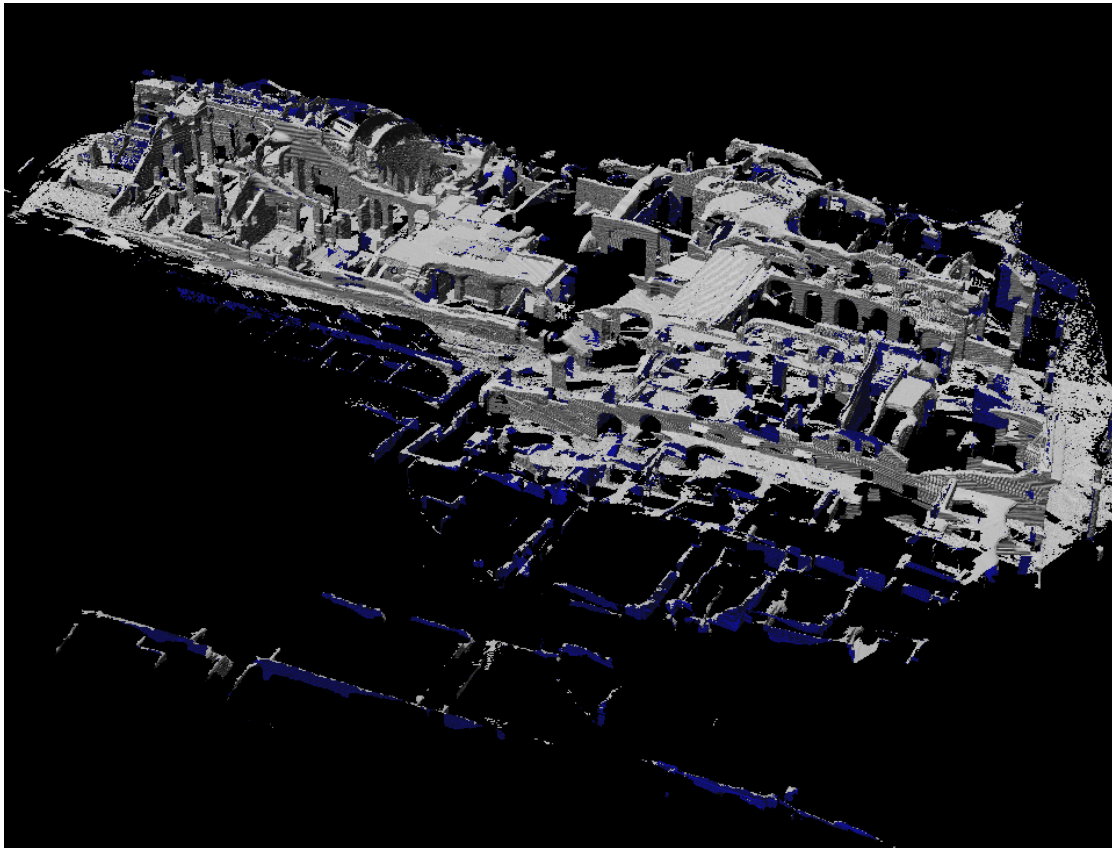
Software

Software and Processing:

[Leica Software](#) | [OptoCAT](#) | [Polyworks](#) | [Rapidform](#) | [Laser Control](#)

[File formats and exporting your data](#)

Acquisition and processing data from a variety of instruments presents many challenges. The Center utilizes a range of software solutions to address these challenges. Primary software applications used for processing scanning data are Cyclone (Leica), Optocat (Breuckmann), TrueView (Leica), XOR (Rapidform) and PolyWorks (Innovetric). More details on these solutions, other software used by the Center's scanning teams, and how they are used can be found on each software package's individual page.



Login

[Log in](#)

