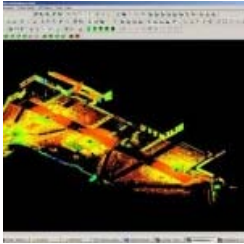


Geospatial Modeling & Visualization

*A Method Store for Advanced Survey
and Modeling Technologies*

[GMV](#) [Geophysics](#) [GPS](#) [Modeling](#) [Digital Photogrammetry](#) [3D Scanning](#) [Equipment](#) [Data and Projects by Region](#)

Leica C10 Scanning Workflow



- [Leica C10: Setting Up The C10](#)
- [Leica C10: Starting a New Project](#)
- [Leica C10: Starting a Scan](#)
- [Leica C10: Exporting Your Scan Data](#)

[Login](#)

[Log In](#)