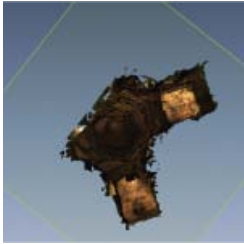


Geospatial Modeling & Visualization

*A Method Store for Advanced Survey
and Modeling Technologies*

[GMV](#) [Geophysics](#) [GPS](#) [Modeling](#) [Digital Photogrammetry](#) [3D Scanning](#) [Equipment](#) [Data and Projects by Region](#)

Digitizing Archaeological Features in Rapidform



- [Rapidform: Basic Digitizing of archaeological features from scan data: Annotated 3D models](#)
- [Basic Digitizing of archaeological features from scan data in Rapidform: Sections, Profiles, Plans and Elevations](#)
- [Rapidform: Basic Workflow to start a digitizing project Part 1](#)
- [Subsetting and Decimating Meshes in Rapidform XOR](#)
- [Rapidform: Basic Workflow to start a digitizing project Part 2](#)
- [Rapidform: Mesh Cleaning](#)
- [Comparing 3D models in Rapidform](#)
- [Rapidform: Digitizing Using the Pencil Tool](#)
- [Rapidform: Digitizing Using the Spline Tool](#)

[Login](#)

[Log in](#)