

[Scan Level Form - Leica C10](#)



[Scan Level Form - Z+F Imager 5006i](#)



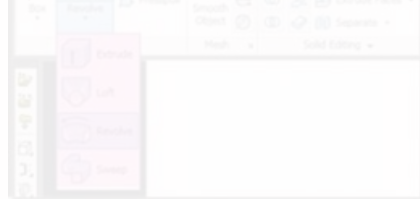
[Leica Cyclone 7.1.1 : Interface Basics](#)



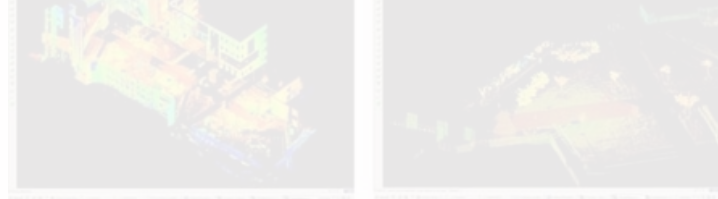
[Leica C10: Setting Up The C10](#)



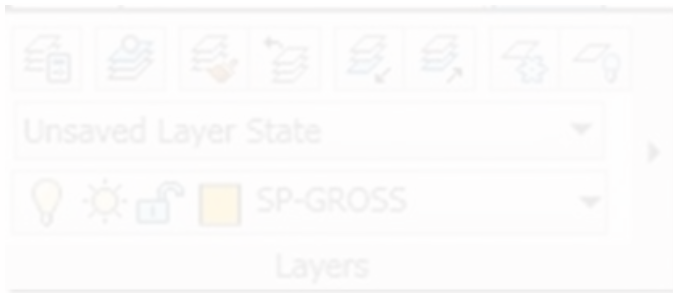
[Leica Cyclone 7.1.1 : Importing Data into Cyclone](#)



[Modeling an Irregular Feature from Point Cloud Data - Method 1](#)



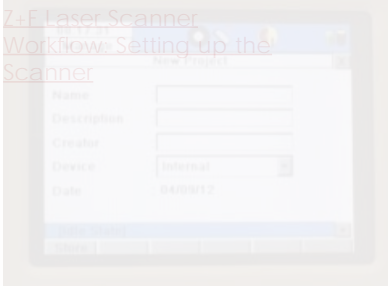
[Leica Cyclone 7.1.1 - Creating Basic Geometries Tracing Topography \(2D\)](#)



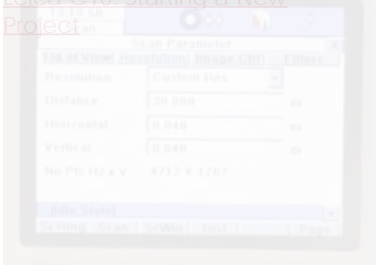
[AutoCAD 2009 - Scaling and Adjusting the Coordinate System of AutoCAD Objects](#)



[Z+F Laser Scanner Workflow: Setting up the Scanner](#)



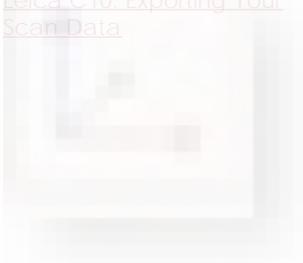
[Leica C10: Starting a New Project](#)



[Leica C10: Starting a Scan](#)



[Leica C10: Exporting Your Scan Data](#)



[Z+F Laser Control: Color Mapping](#)



[Z+F Laser Control: Manually Identifying Feature Points](#)



[Z+F Laser Control: Filtering and Exporting Your Data](#)



[Leica Cyclone 7.0: Modeling a Flat Surface](#)



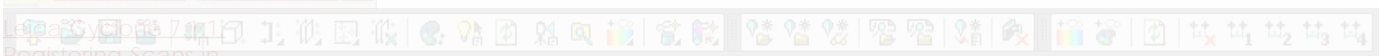
[Leica Cyclone 7.0: Modeling - Editing, Extending, and Extruding Rectangular Patches](#)



[Leica Cyclone 7.0: Modeling Non-Rectangular Patches](#)



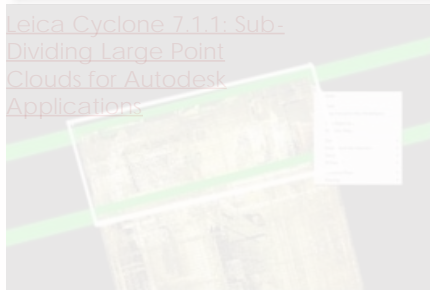
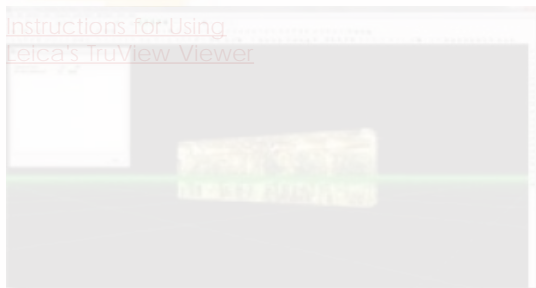
[Leica Cyclone 7.0: Registering Scans in Leica CloudWorx 4.2 and AutoCAD 2012 - Digitizing a Point Cloud in 2D](#)





University of Arkansas -
Mel Walker Building - In-
terior - Basement Level

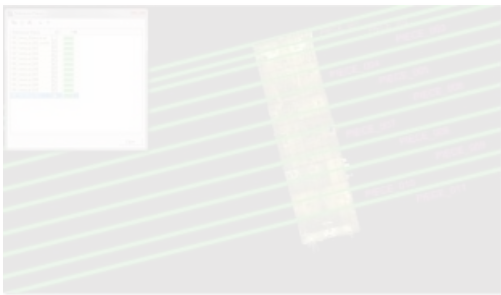
flat1.zfs



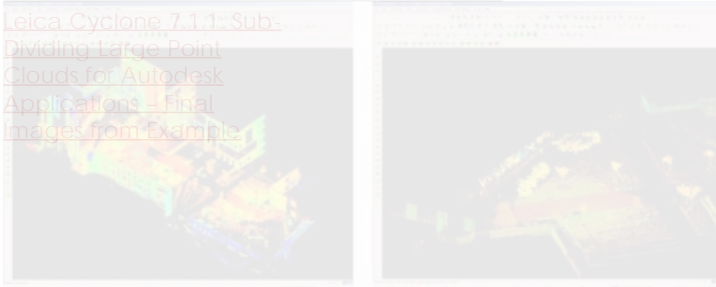
Leica Cyclone 7.1.1: Sub-
Dividing Large Point
Clouds for Autodesk
Applications - Exporting
the Data



Z+F Laser Control:
Interface Basics



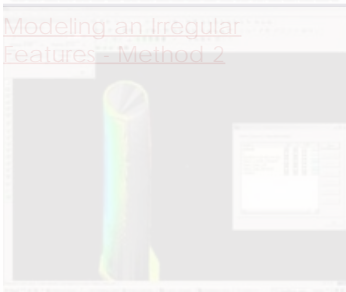
[Leica Cyclone 7.1.1: Sub-Dividing Large Point Clouds for Autodesk Applications - Final Images from Example](#)



[Leica Cyclone - Creating a Mesh and Modeling Surface Topography: Setting Up the Model Space and Break Lines](#)



[Modeling an Irregular Feature - Method 2](#)



[Modeling an Irregular Feature - Comparing in Cyclone Objects to Original Points](#)

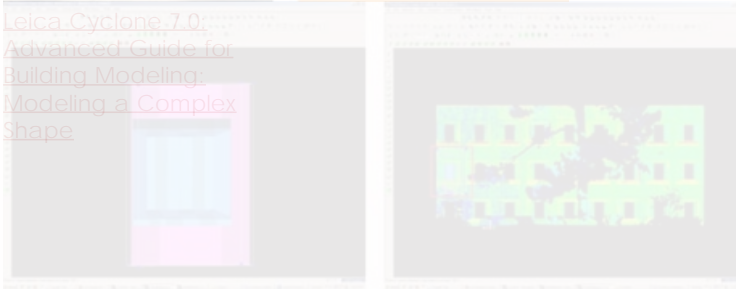
[Leica Cyclone - Creating a Mesh and Modeling Surface Topography: Creating the Topographic Mesh](#)



[Leica Cyclone 7.0: Advanced Guide for Building Modeling: Modeling Openings in Objects](#)



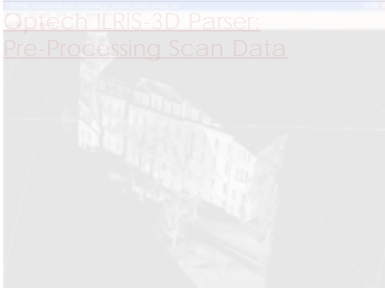
[Leica Cyclone 7.0: Advanced Guide for Building Modeling: Modeling a Complex Shape](#)



[Leica Cyclone 7.0: Advanced Guide for Building Modeling: Modeling and Placing Repeating Features](#)



[Optech ILRIS-3D Parser: Pre-Processing Scan Data](#)



[Polyworks PIFedit:](#)

1. [Cleaning Point Cloud](#)
2. [Data](#)
3. 3
4. 4
5. 5
6. 6

- 7. 7
- 8. 8
- 9. 9
- 10. 10
- 11. 11

Login

[Log in](#)

© 2013 - Geospatial Modeling & Visualization