

Geospatial Modeling & Visualization

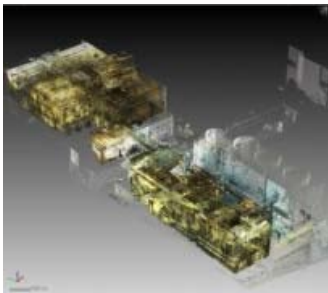
A Method Store for Advanced Survey and Modeling Technologies

[GMV](#) [Geophysics](#) [GPS](#) [Modeling](#) [Digital Photogrammetry](#) [3D Scanning](#) [Equipment](#) [Data and Projects by Region](#)

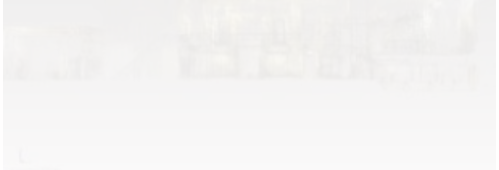
Tag Archives: *Data Viewing*

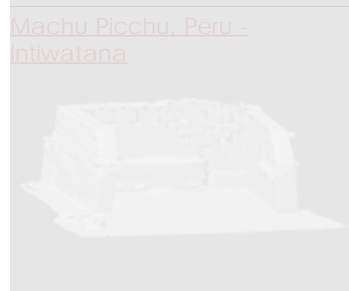
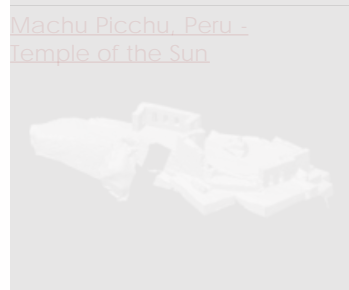
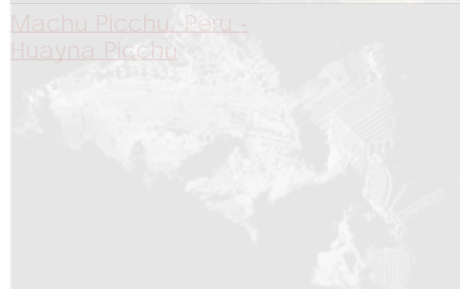
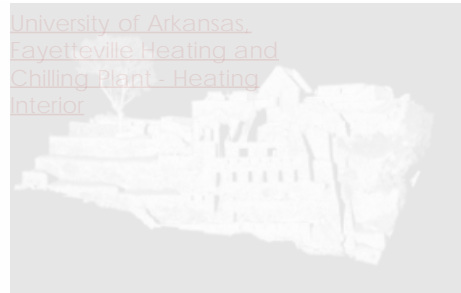


[University of Arkansas,
Fayetteville - Plaza](#)



[University of Arkansas,
Fayetteville Heating and
Chilling Plant - Chilling
Interior](#)







[Machu Picchu, Peru - Temple of the Condor](#)



[Machu Picchu, Peru - Knob Room](#)



[Machu Picchu, Peru - Water Mirrors Room](#)



[Ostia Antica, Italy - Casa Giordino Insula](#)



[Ostia Antica, Italy - House of the Charioteers Exterior](#)



[Ostia Antica, Italy - Baths of the Seven Sages](#)



[Ostia Antica, Italy -
Capitoline Temple](#)



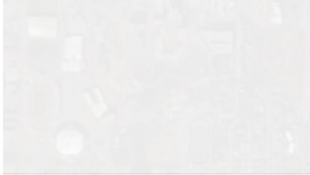
[University of Arkansas,
Fayetteville -
Photogrammetry Mosaic](#)



[University of Arkansas,
Fayetteville -
Photogrammetry Mosaic
Southwest](#)



[University of Arkansas,
Fayetteville -
Photogrammetry Mosaic
Southeast](#)



[University of Arkansas,
Fayetteville -
Photogrammetry Mosaic
Northeast](#)



[University of Arkansas,
Fayetteville -
Photogrammetry Mosaic
Northeast](#)



[University of Arkansas,
Fayetteville -
Photogrammetry Mosaic
Northwest](#)



[Cuzco, Peru -
Photogrammetry of
Kuricancha](#)



[Cuzco, Peru -
Photogrammetry of Ortho
Sagaywaman](#)



[Tiwanaku, Bolivia - Ortho
Image \(1992\)](#)



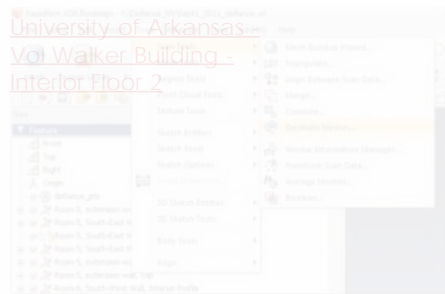
[Tiwanaku, Bolivia - Digital
Elevation Model \(1992\)](#)



[Tiwanaku, Bolivia - Digital
Elevation Model \(1972\)](#)



University of Arkansas -
Vol Walker Building -
Interior Floor 1



Working with terrestrial
scan or
photogrammetrically
derived meshes in ArcGIS.



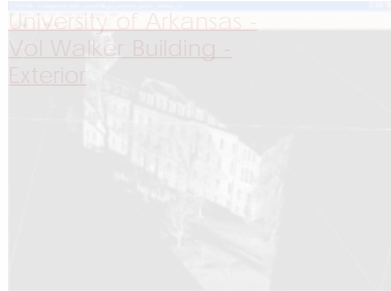
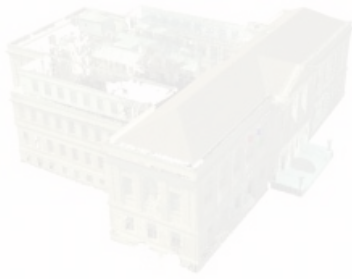
University of Arkansas -
Vol Walker Building -
Interior Floor 3



University of Arkansas -
Vol Walker Building -
Interior Basement Level



University of Arkansas -
Vol Walker Building -
Interior Basement Level



Polyworks PIFEdit:

1. 1 [Cleaning Point Cloud](#)
2. 2 [Data](#)
3. 3
4. 4
5. 5
6. 6
7. 7
8. 8
9. 9
10. 10

Login

[Log in](#)