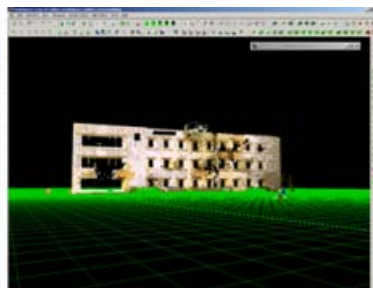
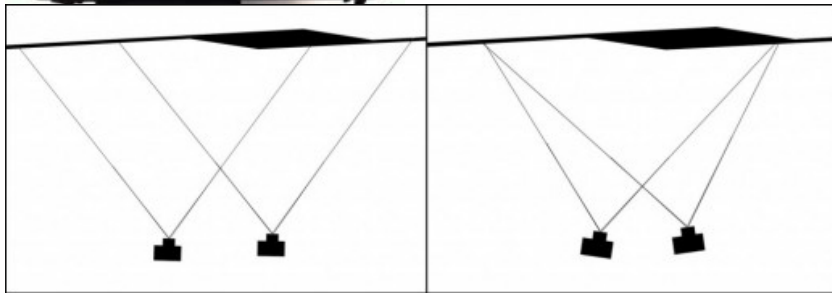


# Geospatial Modeling & Visualization

A Method Store for Advanced Survey and Modeling Technologies

GMV Geophysics GPS Modeling Digital Photogrammetry 3D Scanning Equipment Data and Projects by Region

Tag Archives: *Workflow*



[Leica Cyclone 7.0:  
Advanced Guide for  
Building Modeling: Tracing  
& Modeling a Curved  
Building Footprint](#)

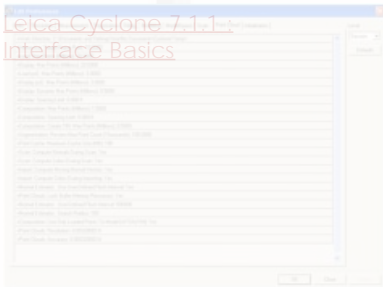
## Polyworks Interface Basics



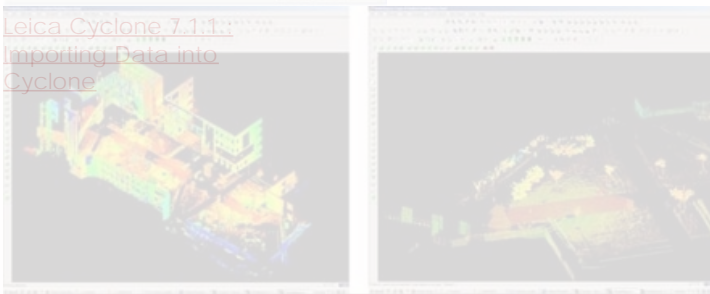
## Photo Modeling in SketchUp



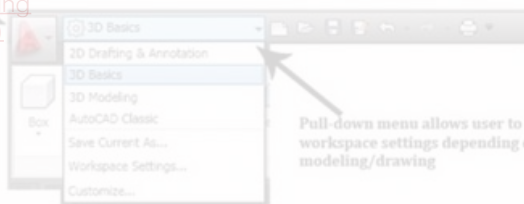
## Leica Cyclone 7.1.1 - Interface Basics



## Leica Cyclone 7.1.1 - Importing Data into Cyclone

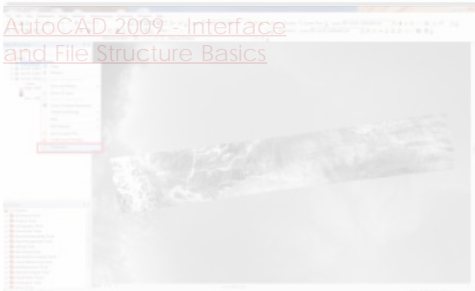


## Leica Cyclone 7.1.1 - Creating Basic Geometries, Tracing Topography (2D)



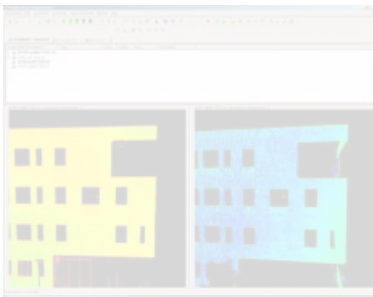
Pull-down menu allows user to change workspace settings depending on type of modeling/drawing

## AutoCAD 2009 - interface and File Structure Basics



## On-the-fly and Permanent Orthorectification of NITF Images in ArcMap

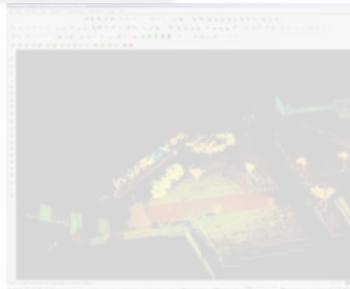
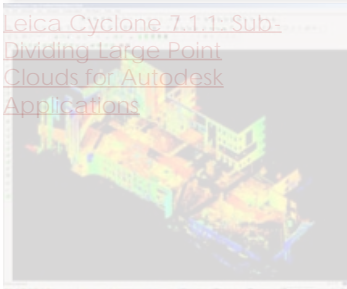




[Leica Cyclone 7.1.1: Registering Scans in Cyclone](#)



[Leica Cyclone 7.1.1: Sub-Dividing Large Point Clouds for Autodesk Applications](#)



[Leica Cyclone - Creating a Mesh and Modeling Surface Topography: Setting Up the Model Space and Break Lines](#)



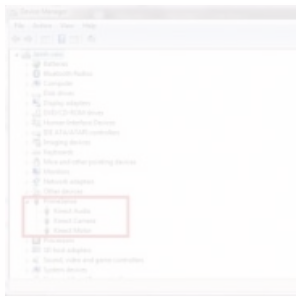
[Guide to leveling and aligning the Breuckmann tripod and SmartScan HE for calibration](#)



[Microsoft Kinect - Hardware](#)

# OpenNI™

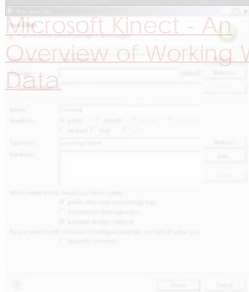
[Microsoft Kinect - An Overview of Programming API's](#)



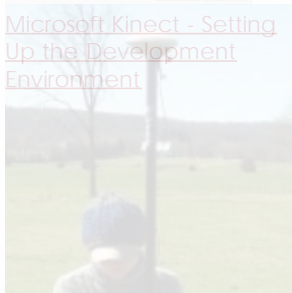
[Microsoft Kinect APIs - Installing the OpenNI Microsoft Kinect software Modules To Use](#)



[Microsoft Kinect - An Overview of Working With Data](#)



[Microsoft Kinect - Setting Up the Development Environment](#)



[Acquire External Control with Trimble 5700/5800](#)

- 1
- 2
- 3
- 4
- 5
- 6

7. 7  
8. 8

**Login**

---

[log in](#)

© 2013 - Geospatial Modeling & Visualization