

Geospatial Modeling & Visualization

A Method Store for Advanced Survey and Modeling Technologies

GMV Geophysics GPS Modeling Digital Photogrammetry 3D Scanning Equipment Data and Projects by Region

Working with terrestrial scan or photogrammetrically derived meshes in ArcGIS.

Introduction

Many archaeological projects use a GIS to manage their data. After terrestrial scan or photogrammetric modeling data has been collected and cleaned, it may be convenient to integrate it into a project's GIS setup. As ArcGIS is widely available and in use both in University research departments and government offices, we're using it for the example here, but something like this should work for other GIS packages.

The first part of the workflow addresses working with meshes created from terrestrial scan data, and assumes you have existing meshes in Rapidform.

Decimation

Before exporting a dataset for use in a GIS you may want to decimate the dataset to produce a lower resolution model for visualization. High resolution models can slow rendering down and make manipulation of the model difficult.

- a. Select the model you will be exporting either graphically or through the menu tree on the left hand side of the screen.
- b. In the main menu select **Tools** and then **Scan Tools** and **Decimate Meshes**

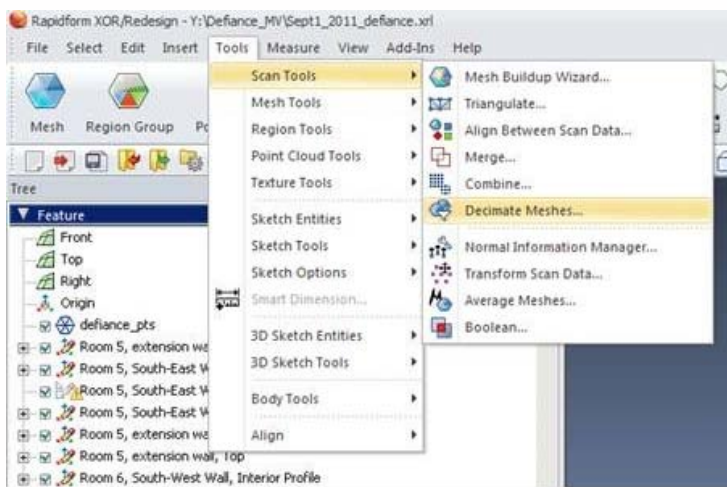


Fig. 1: Select the Decimate Meshes tool

- c. In the **Decimate Meshes** menu confirm the selection of the **Target Mesh**.
- d. Under **Method** choose **Poly-Face Count** for best control over the size of the resultant model.
- e. Under **Options** set the **Target Poly-Face Count**. Numbers under 100,000 will render relatively quickly in ArcGIS. Inclusion of more than 500,000 polyfaces is not recommended.

f. Under **More Options** select **Preserve Color**.

g. Click **“OK”** to confirm and decimate the mesh.



Fig. 2: Select options for decimating the mesh.

Subsetting and Splitting Meshes

(Skipping ahead a bit conceptually...) When you import your mesh data into ArcGIS each mesh is stored as a single multipatch. You don't want to edit the shape of the multipatch in ArcGIS, only the placement (trust us on this). So any subsetting of the mesh needs to be performed before exporting from Rapidform (or other modeling software of your choice). Why subset or split a mesh?

a. Navigating in tight, enclosed spaces. You might want to be able to turn off the visibility of the back wall of a room or one half of a cistern to better visualize its interior.

b. Major sections of a mesh. If you have a scan of a building including several rooms or structures and you want to be able to visualize them individually, then they need to be made into discrete meshes.

Exporting

a. Select the model you want to export from the menu tree on the left hand side of the screen.

b. Right-click and select **“Export”**. Select an appropriate file format (see step 2, below, for choices).

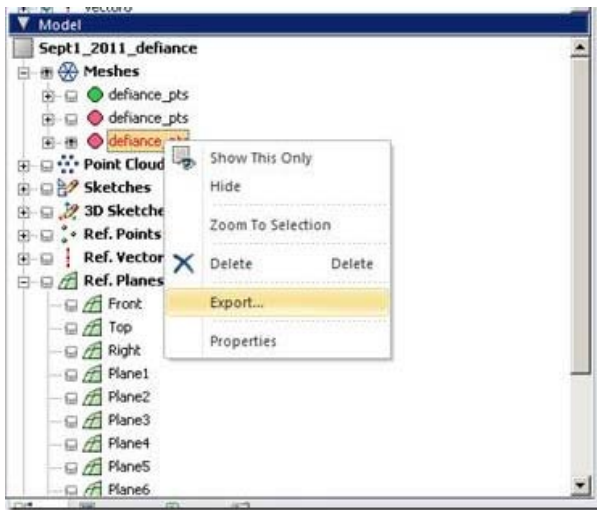


Fig. 3: Export via the menu tree.

4. Export Formats

a. Get a list of valid export formats by looking in the **dropdown** menu of the **export** dialog box.

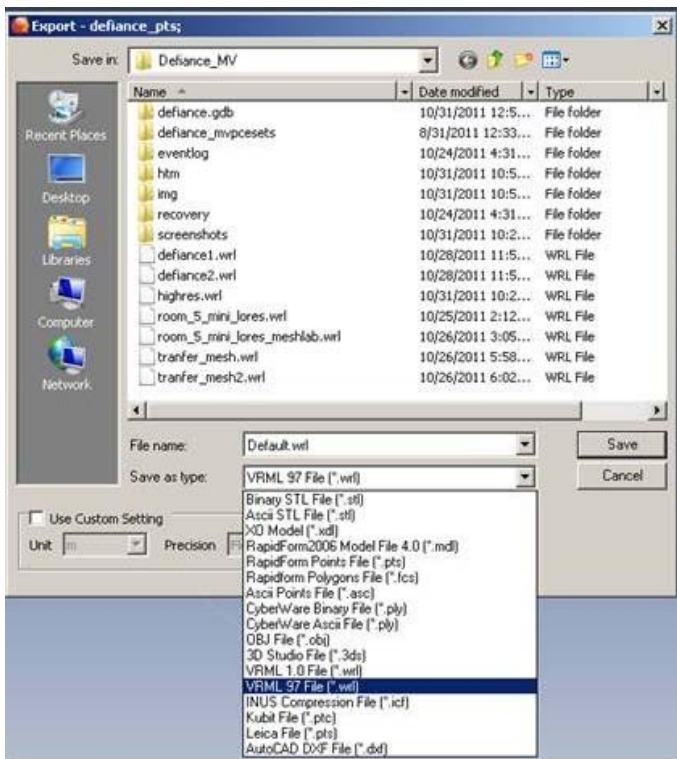


Fig. 4: Valid export file formats.

b. Suggested formats for export are VRML (file extension .wrl), collada (.dae) and AutoDesk 3d Max (.3ds).

Advice on Textures and Color Data

Modeling software manages color data in several ways. Color data might be recorded as UV coordinates referencing a separate texture file, as per vertex, per face or per wedge color information. Color data imported with scan data will typically default to storage as per vertex color. ArcGIS only recognizes color data stored explicitly in texture files, so if your color data is currently stored in another form you need to convert it.

Textures direct from Rapidform

i. Select the **Mesh** mode from the main toolbar.



ii. Select **Tools** and **Texture Tools** and **Convert Color to Texture**.

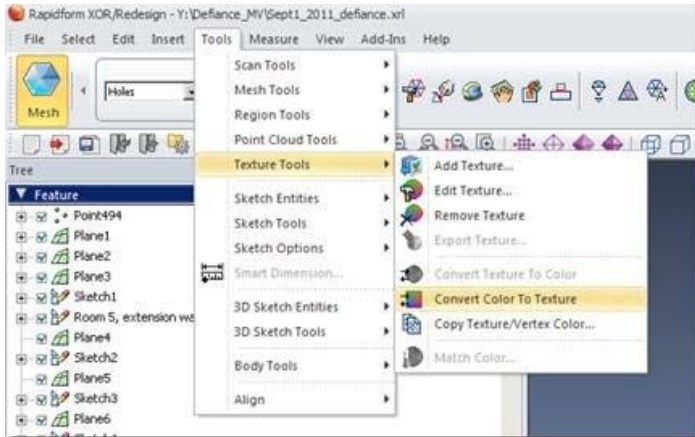


Fig. 5: Conver Color to Texture

iii. After creating the texture, export the model as usual.

iv. Export the texture by going in the **Main Menu** to **Texture Tools**, then **Export Texture** to save the texture file. Store it in the same folder as the model.

Color and Texture in Meshlab

Sometimes you want more tools for color editing. Sometimes ArcGIS doesn't like the textures produced by Rapidform. For this reason, we suggest an alternative method for setting the texture data using Meshlab. Meshlab is open source, and can be found at meshlab.sourceforge.net.

i. From **Rapidform** export a **.VRML** file by right-clicking (in the model tree menu on the left land side of the screen) on the mesh you wish to export and selecting **Export**.

ii. In **Meshlab**, open a new empty project. Go to **File** and **Import Mesh**.

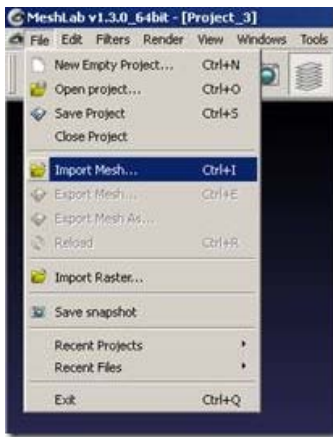


Fig. 6: Import the Mesh to Meshlab

iii. Select the VRML file you just created and hit **Open**.

iv. Transfer the color information from per vertex to per face. In the **main menu** go to **Filters**, then to **Color Creation and Processing**, then to **Transfer Color: Vertex to Face**. Hit **Apply** in the resulting pop-up menu.

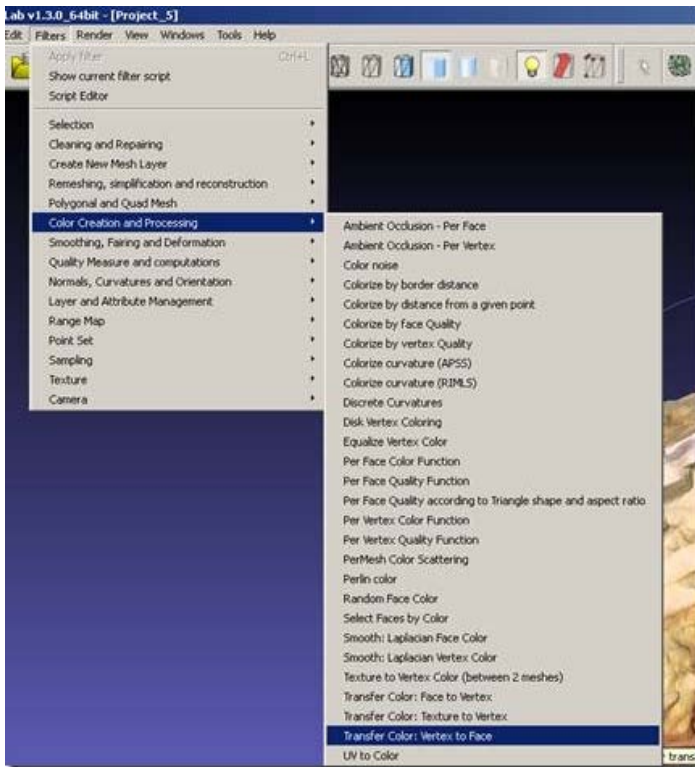


Fig. 7: Transfer color data from the vertices to the faces of the mesh.

v. From the **Main Menu** go to **Filters**, then to **Texture**, then to **Trivial Per-Triangle Parametrization**.

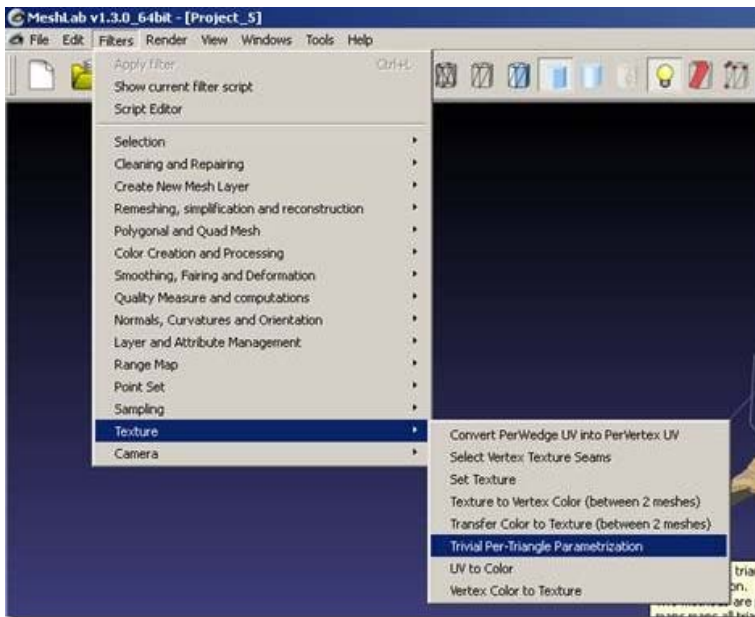


Fig. 8: Create texture data.

In the pop-up menu, select 0 Quads per line, 1024 for the Texture Dimension, and 0 for Inter-Triangle border. Choose the Space Optimizing method. Click Apply.

n.b. If you get an error along the lines of "Inter-Triangle area is too much" your Texture Dimension is too small for the dataset. Increase the texture dimension to resolve the error.



Fig. 9: Set the texture data parameters.

vi. In the Main Menu go to Filters and Texture and Vertex Color to Texture. Accept the defaults for the name and size. Tick the boxes next to Assign texture and Fill Texture.



Fig. 10: Transfer color data to the texture dataset.

vii. In the **Main Menu** go to **File** and **Export Mesh**. Make sure to **UNTICK** the box next to **Vertex Color**. Otherwise ArcGIS gets confused! Make sure the texture file is present. Click **OK** to save.

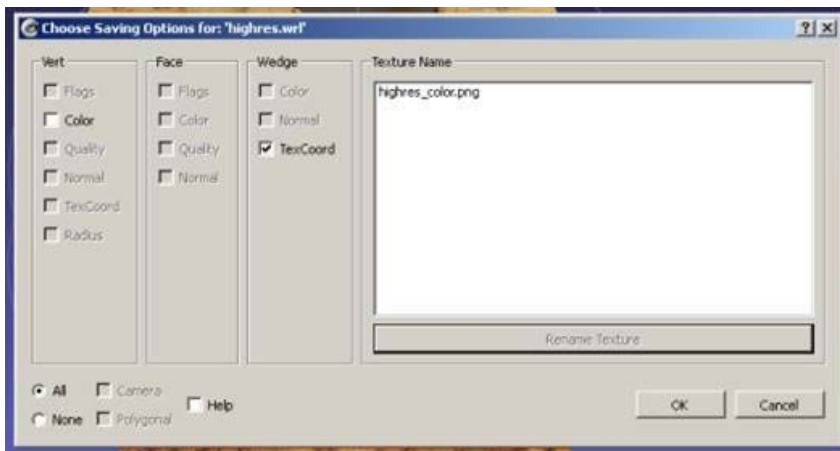


Fig. 11: Export the mesh as collada (dae).

Preparing a GIS to receive Mesh data

Once you have created your mesh files and exported them to collada or something similar and *explicitly assigned* texture data (not to be confused with vertex color, face color or wedge color data), you are ready to import the data into ArcGIS. Assuming your data is not georeferenced, follow the method below. If your data is georeferenced, head over to our [Photoscan to ArcGIS post](#), and follow the import method described there.

1. Preparing the geodatabase

a. Open **ArcCatalog** any way you choose. Create a new geodatabase by right clicking on the folder where you wish to create the geodatabase and selecting **New** and **File Geodatabase**. Only **Geodatabases** support the import of texture data, so don't try and use a shapefile.

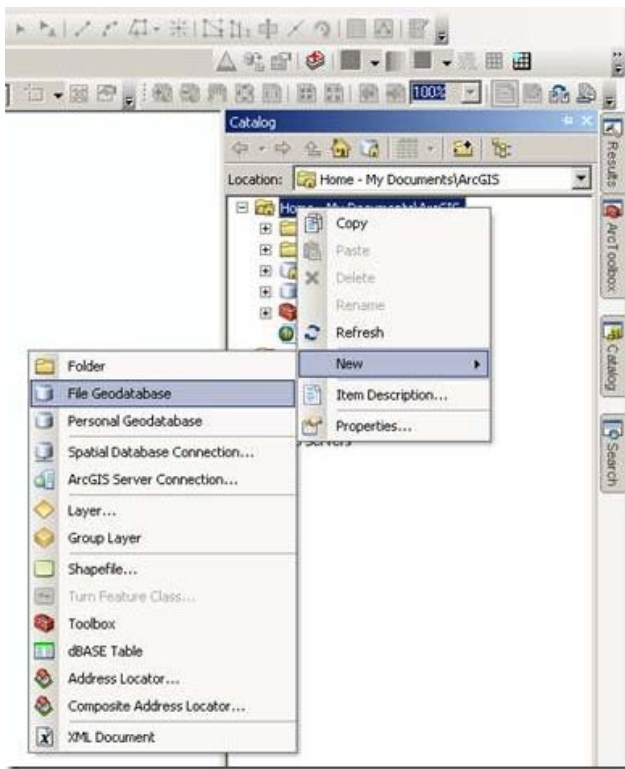


Fig. 14: Create a geodatabase in ArcGIS.

b. Create a **multipatch feature class** in the geodatabase.

c. Ensure that the **X/Y domain** covers the coordinates of any meshes you will be importing. View the **Spatial Domain** by right-clicking on the **feature class** and going to **Properties** and then to the **Domain** tab.



Fig. 15: Check the spatial domain of the new feature class.

d. If the **spatial domain** is not suitable, adjust the **Environment** settings by going to the **Geoprocessing toolbar** in the **Main Menu**. Scroll down to **Geodatabase Advanced** and adjust the **Output XY Domain** as needed. You can also adjust the **Z Domain** in this dialog box.



Fig. 16: Adjust the spatial domain in the environment settings.

Preparing the scene file.

a. Open **ArcScene** and add base data such as a plan of the site, an air photo of the location, etc. The base data will allow you to control the location to which the model is imported. Add the empty **multipatch feature class** you just created.

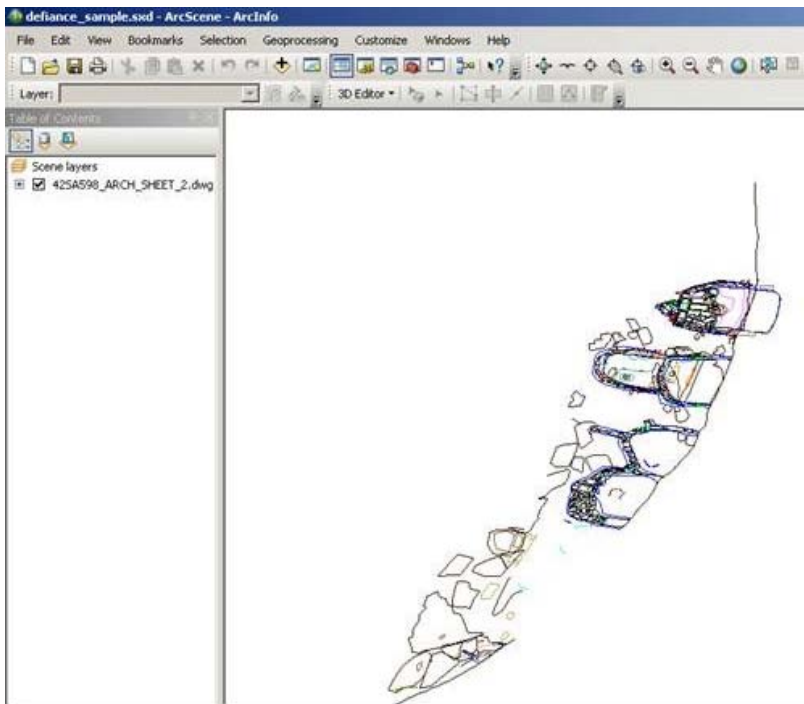


Fig. 17: Add base data to a Scene.

b. Start editing either from the **3D editor** toolbar or by right-clicking on the **multipatch** feature class in the **Table of Contents** and choosing **Edit Features** and **Start Editing**.



Fig. 18: Start editing in ArcScene.

Importing the Scan data

1. Import the **vrml** or **collada** file by selecting the **Create Features Template** for the **multipatch** and clicking on the base plan roughly in the location where you would like the mesh data to appear. Select the **vrml** or **collada** file from the **Open File** dialog box that appears. Wait while the file is converted.

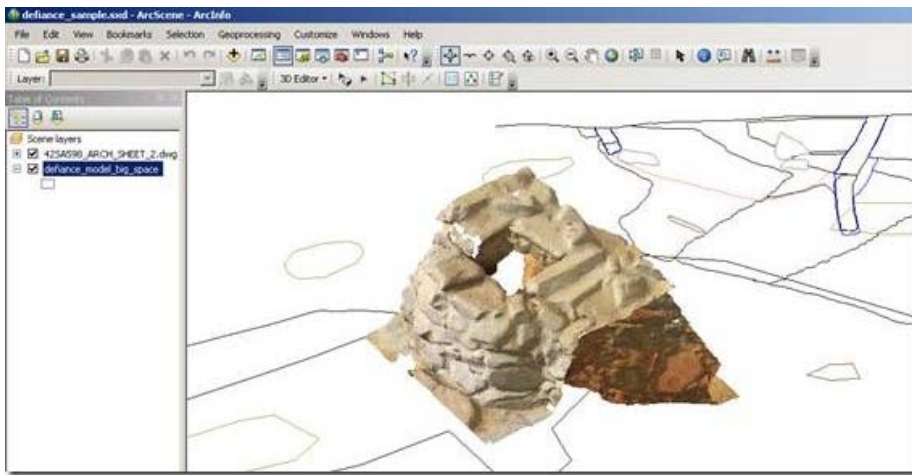


Fig. 19: The vrml data is converted to multipatch on import.

2. You can now Move, Rotate, Scale the imported multipatch in ArcScene by **selecting** the feature using the **Edit Placement** tool and inputting values in the **3D Editing** toolbar or by interactively dragging the multipatch feature.

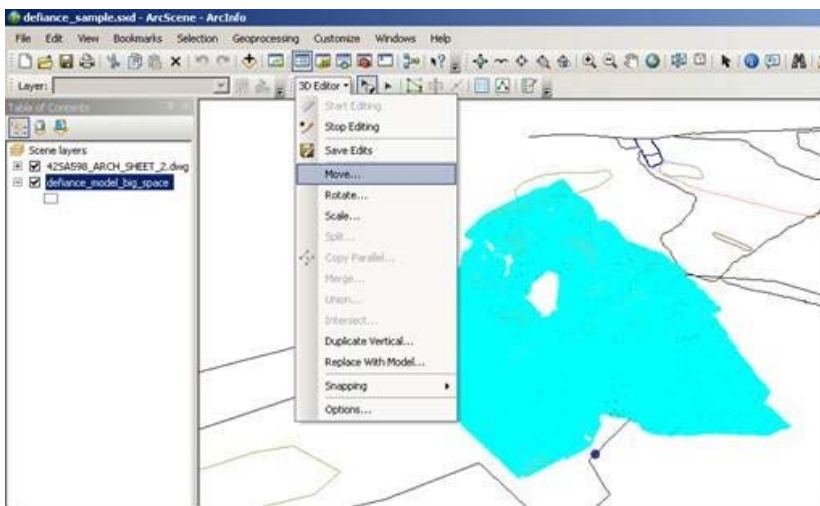
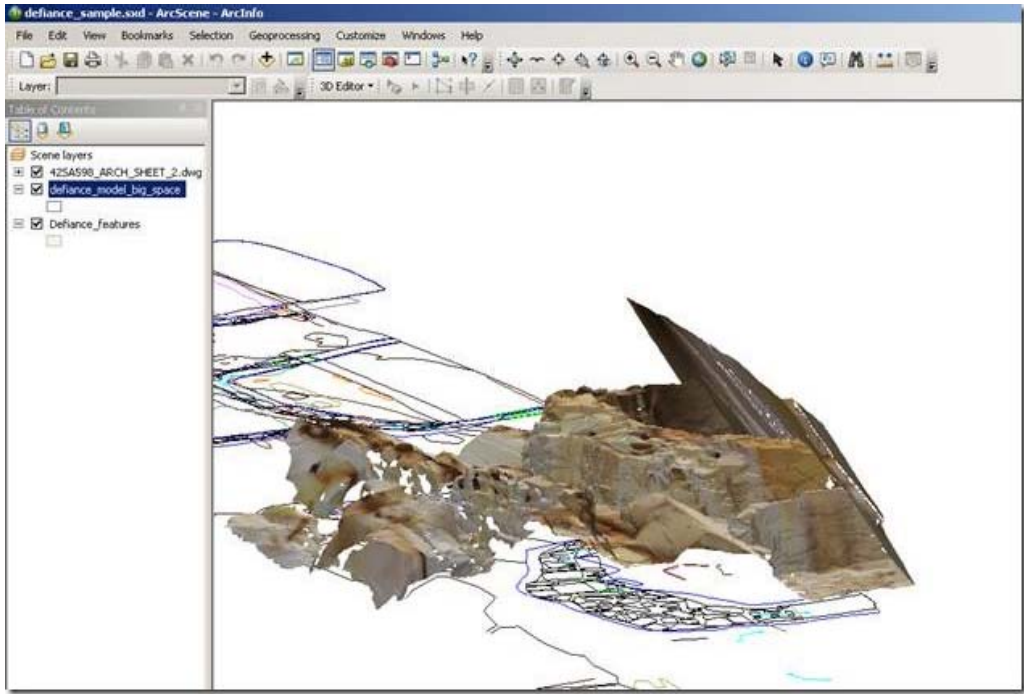


Fig. 20: Select the multipatch feature to adjust its position and scale.

3. Once you are satisfied with the placement of the multipatch, you can add attribute data.

A note on rotation in Arcscene

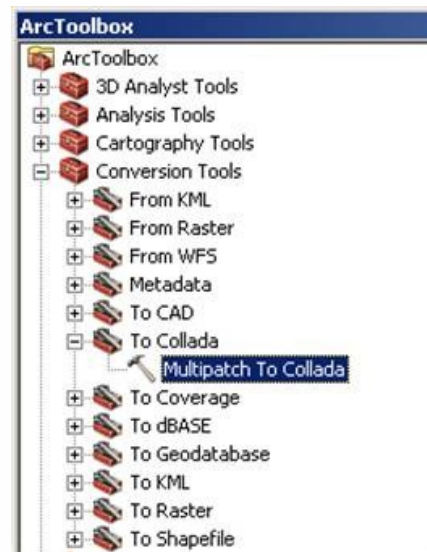
You can only rotate in the x-y plane (that is, around z-axis) in ArcScene. If you need to rotate your data around the x or y axis you need to do this in your modeling software before import. Bringing a .dxf of the polygon or point data you are trying to align the mesh with into your modeling software is probably the simplest way to get the alignment right. You may have to translate your .dxf to a local grid because most modeling software doesn't like real world coordinates. Losing the real coordinates during this step doesn't matter because you're just using the polygon data to set orientation around the x and y axes. You'll get the model in the correct real-world place when you import into ArcScene.



Re-exporting

Fig. 21: The textured mesh data appears over the correct location on the base plan.

4. At this point it's probably a good idea to re-export a **collada** model of your newly scaled and located mesh data. If not, every time you update the model you will have to go through the scaling and locating process again.



a. In ArcToolbox go to **Conversion Tools> To Collada> Multipatch To Collada**.

Fig. 22: Export Multipatch to Collada

b. Select the multipatch for export and the folder where you want the re-exported model to appear.

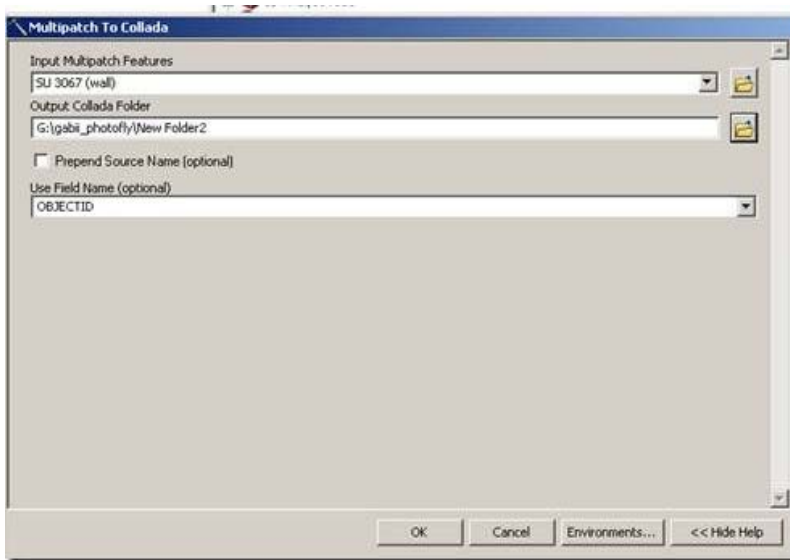


Fig. 23: Set parameters for export.

c. Check that the model has exported correctly by opening it in your modeling software.

n.b. You may have to reapply the textures at this point.

A note on features for attribute management

It may be convenient to store attribute information in other **related** feature classes so that a single meshed model can have multiple, spatially discrete attributes. How you design your geodatabase will vary greatly dependent on project requirements.

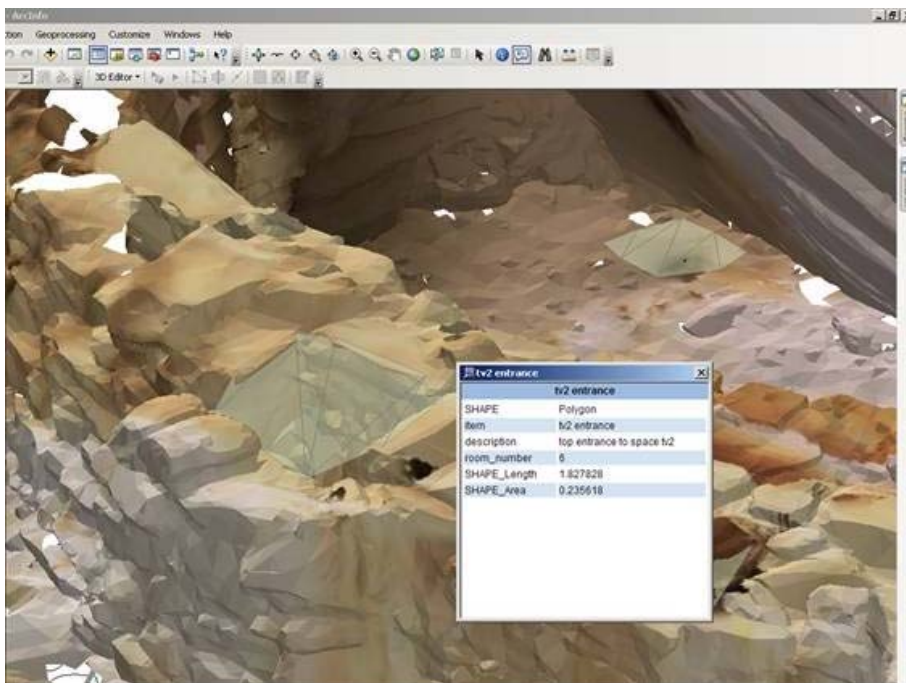


Fig. 19: Additional related feature classes can be used to manage attribute data.

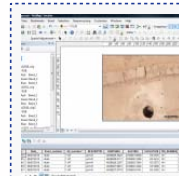
A note on just how much mesh data you can get into ArcScene.

1. If you are using a file geodatabase, in theory the size of the geodatabase is unlimited and you can include all the mesh data you want.

2. In practice, individual meshes with more than 200,000 polygons have problems importing on an average™ desktop computer.

3. In practice, rendering becomes slow and jumpy with more than 200 MB of mesh data loaded into a single scene on an average™ desktop computer. The size and quality of your textures will also have an impact here. Compressed textures are probably a good plan.

4. In short, the limitation is on rendering and on what can be cached in an individual scene, rather than on storage in the geodatabase. Consider strategies including having low polygon count meshes for display in a general scene, with links to high polygon count meshes, which can be stored in the geodatabase but not normally rendered in the scene, which can be called up via links in html popup, the attribute table, or via another script.



You are reading the series: [3D data and GIS](#)
Working with terrestrial scan or photogrammetrically derived meshes in ArcGIS.

Please cite this document as: **Opitz, Rachel.** 2011. Working with terrestrial scan or photogrammetrically derived meshes in ArcGIS..CAST Technical Publications Series. Number 5966. <http://gmv.cast.uark.edu/modeling/software-visualization/rapidform-xor/workflow-rapidform-xor/working-with-terrestrial-scan-or-photogrammetrically-derived-meshes-in-arcgis/>. [Date accessed: 27 April 2013]. [Last Updated: 28 February 2013]. *Disclaimer: All logos and trademarks remain the property of their respective owners.*

Login

[Log in](#)