

Geospatial Modeling & Visualization

A Method Store for Advanced Survey and Modeling Technologies

GMV Geophysics GPS Modeling Digital Photogrammetry 3D Scanning Equipment Data and Projects by Region

Rapidform: Basic Workflow to start a digitizing project Part 2

(AKA The Meshing in Rapidform Tutorial)

These tutorials will show you how to digitize archaeological features from terrestrial scan data.
Hint: You can click on any image to see a larger version.

DELETE POINT CLOUD OUTLIERS

Begin by cleaning any obviously erroneous noise from the dataset. Left click and drag to select outliers and press "Delete".

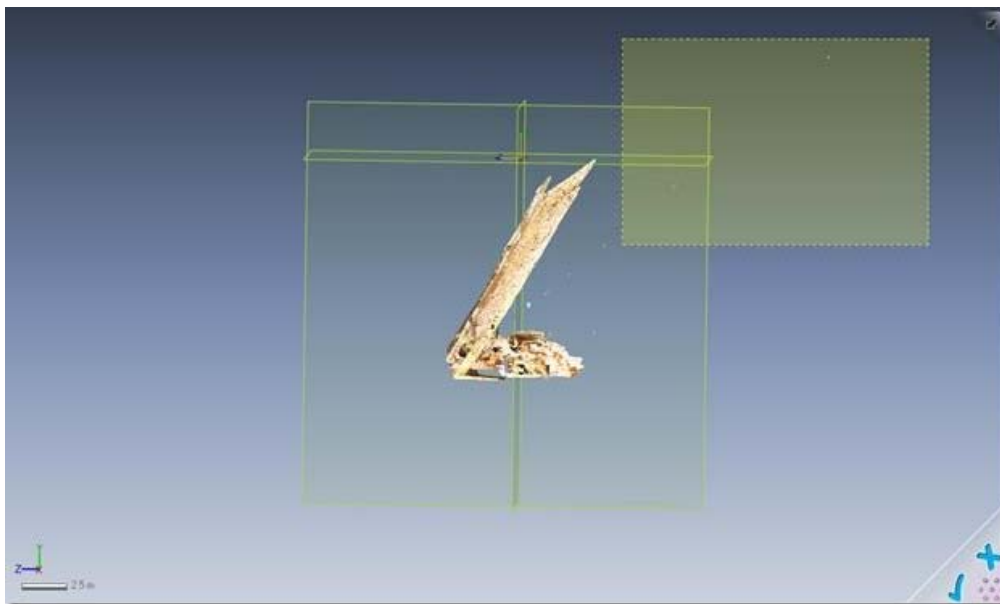


Fig. 12: Obtaining the correct alignment.

THE GENERATE MESH BUTTON

Select the "Point Cloud" button and then the "Generate Mesh" button from the point cloud menu.



Fig. 13: The Point Cloud button

MESH THE WHOLE DATASET

Generate a mesh for the entire dataset by left clicking and dragging to select the entire point mesh.

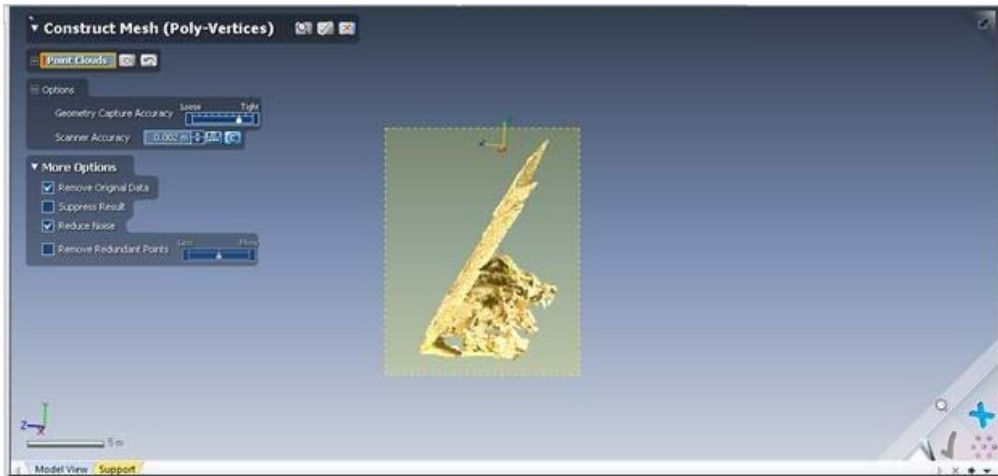


Fig. 14: Whole model mesh construction.

MESH A SUBSET OF THE DATASET

OR generate a mesh for a subset of the dataset by only selecting that area, either manually



Fig. 15: Limited area mesh construction.

SUBSET USING THE VIEW CLIP BOX STEP 1

OR using a **View Clip Box**.

To use a **View Clip Box**, exit the "**Construct Mesh**" menu and select "**View**" and then "**View Clip**".

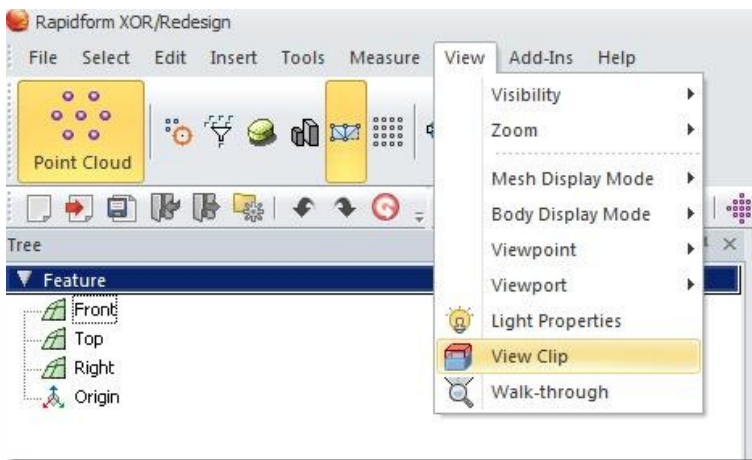


Fig. 16: The View Clip tool.

SUBSET USING THE VIEW CLIP BOX STEP 2

Select **"Inside Box"** and adjust the position and size of the box by clicking on the blue arrows and nodes (which turn yellow when selected). Press the **"check"** button to commit changes to the **View Clip**.

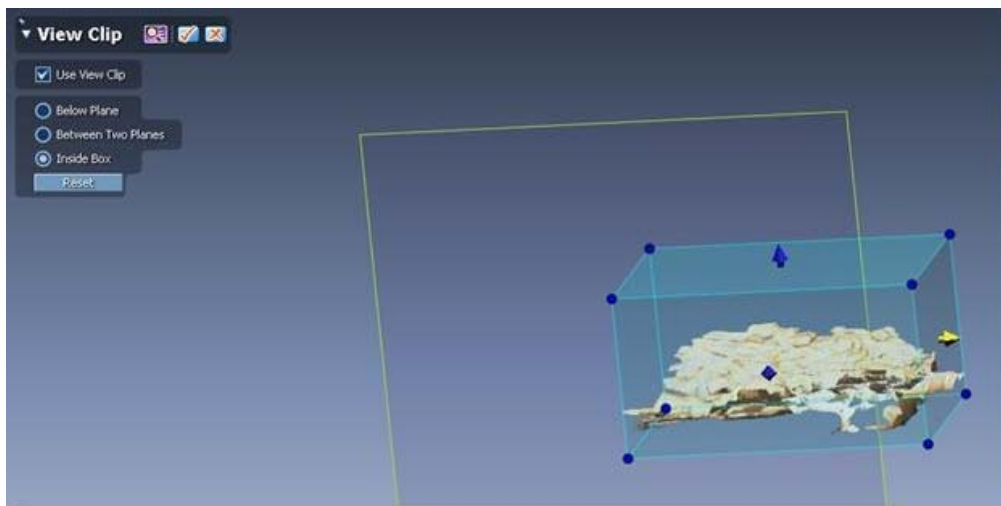


Fig. 17: Interactive view clipping.

Then return to the **"Construct Mesh"** menu to build the local mesh.

CONTINUE TO...

If your mesh is especially dirty, continue to [Mesh Cleaning in Rapidform](#).

Otherwise continue directly to [Digitizing Using the Penicl tool in Rapid Form](#).



You are reading the series: [Digitizing Archaeological Features in Rapidform](#)
[Rapidform: Basic Digitizing of archaeological features from scan data: Annotated 3D models](#)
[Basic Digitizing of archaeological features from scan data in Rapidform: Sections, Profiles, Plans and Elevations](#)

[Rapidform: Basic Workflow to start a digitizing project Part 1](#)
[Subsetting and Decimating Meshes in Rapidform XOR](#)
Rapidform: Basic Workflow to start a digitizing project Part 2
[Rapidform: Mesh Cleaning](#)
[Comparing 3D models in Rapidform](#)
[Rapidform: Digitizing Using the Pencil Tool](#)
[Rapidform: Digitizing Using the Spline Tool](#)

Please cite this document as: Opitz, Rachel. 2012. Rapidform: Basic Workflow to start a digitizing project Part 2. CAST Technical Publications Series. Number 7397. <http://gmv.cast.uark.edu/modeling/software-visualization/rapidform-xor/workflow-rapidform-xor/basic-workflow-to-start-a-digitizing-project-in-rapidform-part-1-2-3/>. [Date accessed: 27 April 2013]. [Last Updated: 17 May 2012]. *Disclaimer: All logos and trademarks remain the property of their respective owners.*

Login

[Log in](#)

© 2013 - Geospatial Modeling & Visualization