

Geospatial Modeling & Visualization

A Method Store for Advanced Survey and Modeling Technologies

[GMV](#) [Geophysics](#) [GPS](#) [Modeling](#) [Digital Photogrammetry](#) [3D Scanning](#) [Equipment](#) [Data and Projects by Region](#)

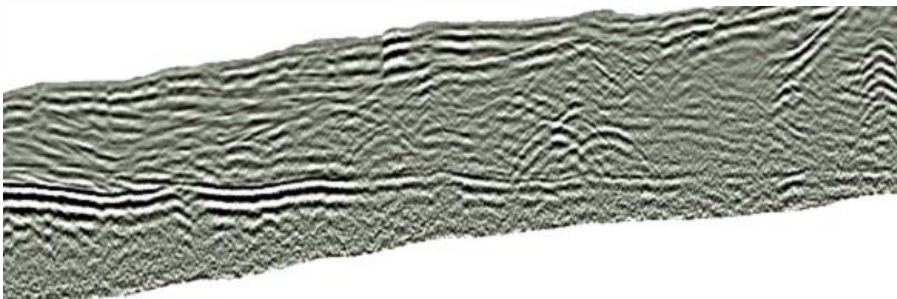
SIR-3000 Ground Penetrating Radar

[Checklist](#) | [Field Metadata Forms](#) | [Setup Operation](#)



CAST has one SIR-3000 unit. The SIR-3000 is a ground penetrating radar acquisition system manufactured by [Geophysical Survey Systems, Inc.](#) It is designed for use by a single operator and allows for field data to be collected, visualized, and stored for later download. The SIR-3000 is compatible with all GSSI antennas for survey flexibility. Depth prospecting varies based on antenna frequency and substrate, but typical investigations range from 0.5 – 3 meters in depth. It is commonly used for geological, archaeological and forensic investigations.

For more information on the SIR-3000, refer to the manufacturer's [website](#) and instrument [datasheet](#).



Login

[Log in](#)