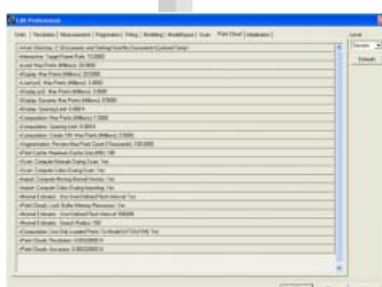
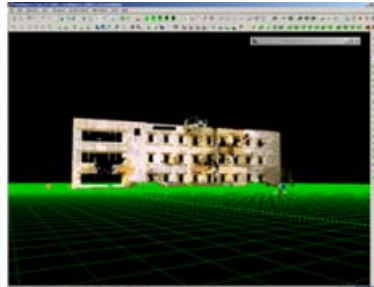
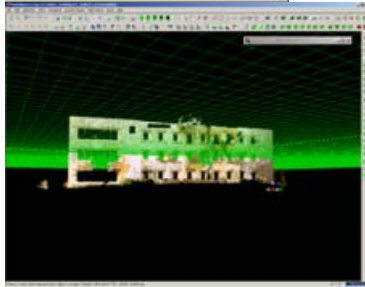


# Geospatial Modeling & Visualization

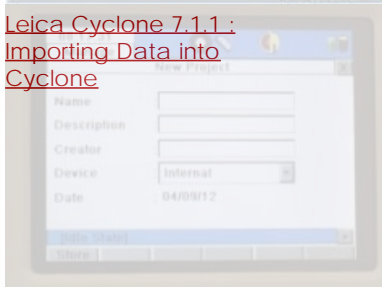
A Method Store for Advanced Survey and Modeling Technologies

GMV Geophysics GPS Modeling Digital Photogrammetry 3D Scanning Equipment Data and Projects by Region

## Category Archives: Cyclone



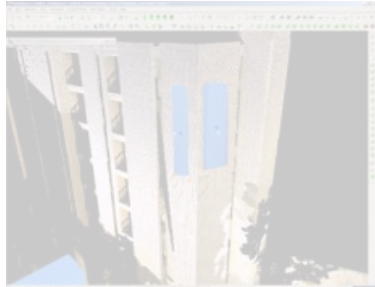
## [Leica Cyclone 7.1.1 : Importing Data into Cyclone](#)



[Leica C10: Starting a New Project](#)



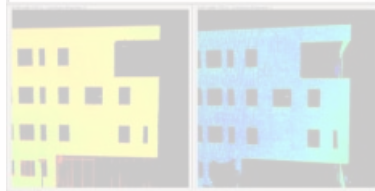
[Leica Cyclone 7.0: Modeling a Flat Surface](#)



[Leica Cyclone 7.0: Modeling - Editing, Extending, and Extruding Rectangular Patches](#)



[Leica Cyclone 7.0: Modeling Non-Rectangular Patches](#)

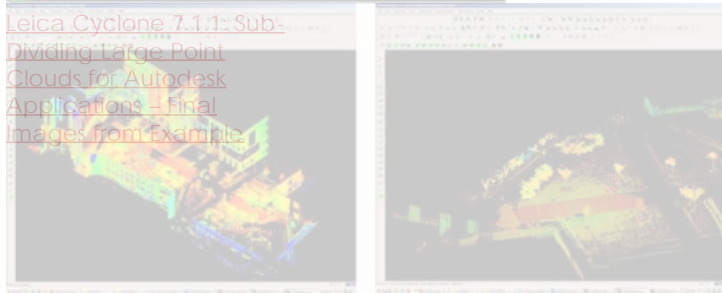
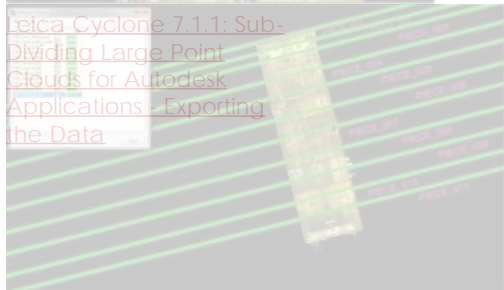
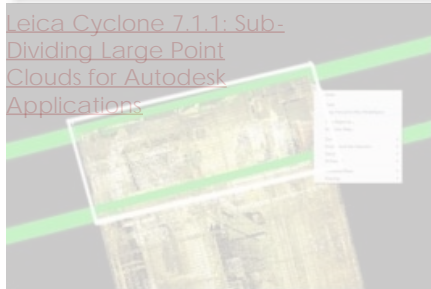


[Leica Cyclone 7.0: Registering Scans in Leica CloudWorx 4.2 and AutoCAD 2012 - Digitizing a Point Cloud in 2D](#)

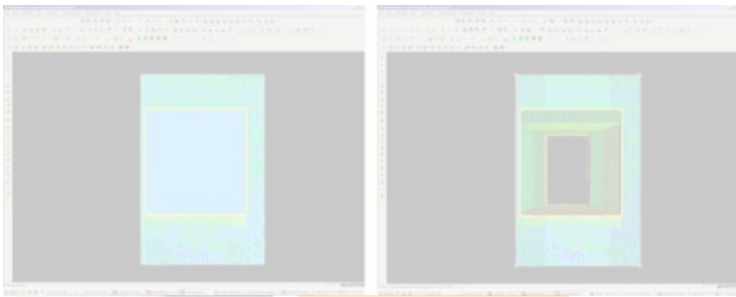


[Using Leica's COE Plug-In in AutoCAD](#)

# flat1.zfs



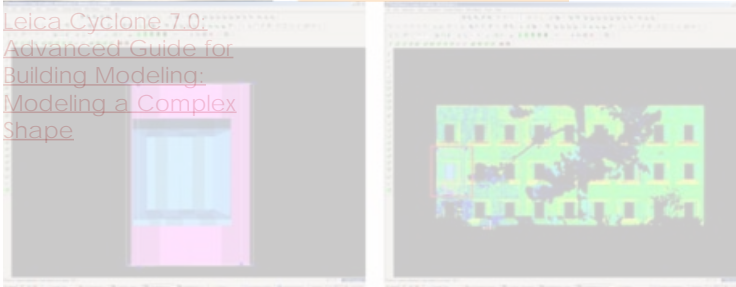
[Leica Cyclone - Creating a Mesh and Modeling Surface Topography](#)  
[Setting Up the Model Space and Topographic Mesh](#)



[Leica Cyclone 7.0:  
Advanced Guide for  
Building Modeling:  
Modeling Openings in  
Objects](#)



[Leica Cyclone 7.0:  
Advanced Guide for  
Building Modeling:  
Modeling a Complex  
Shape](#)



- [Leica Cyclone 7.0:  
Advanced Guide for  
Building Modeling:  
Modeling and Placing  
Repeating Features](#)
- 1
  - 2
  - 3
  - 4
  - 5

Login

[Log in](#)