

# Geospatial Modeling & Visualization

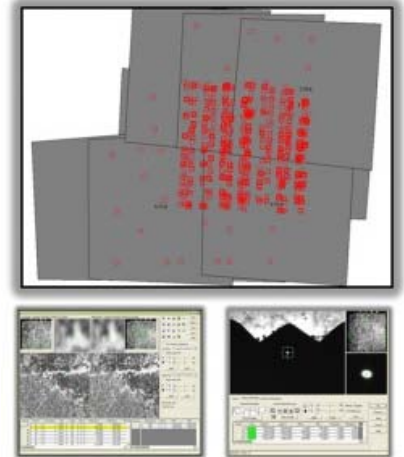
A Method Store for Advanced Survey and Modeling Technologies

[GMV](#) [Geophysics](#) [GPS](#) [Modeling](#) [Digital Photogrammetry](#) [3D Scanning](#) [Equipment](#) [Data and Projects by Region](#)

## ERDAS Imagine LPS

[Workflows](#) | [Metadata Forms](#)

ERDAS Imagine LPS is a well-established, robust photogrammetric processing package for aerial and orbital imagery. Nearly every orbital sensor is supported with rigorous camera model information, and for most other sensors (e.g. GeoEye-1), Rapid Polynomial Coefficient (RPC) processing is also supported. LPS can be used to triangulate image blocks, measure breaklines (in 2D or 3D), generate surface models (DEMs), and/or export orthoimages.



[Login](#)

[Log in](#)