

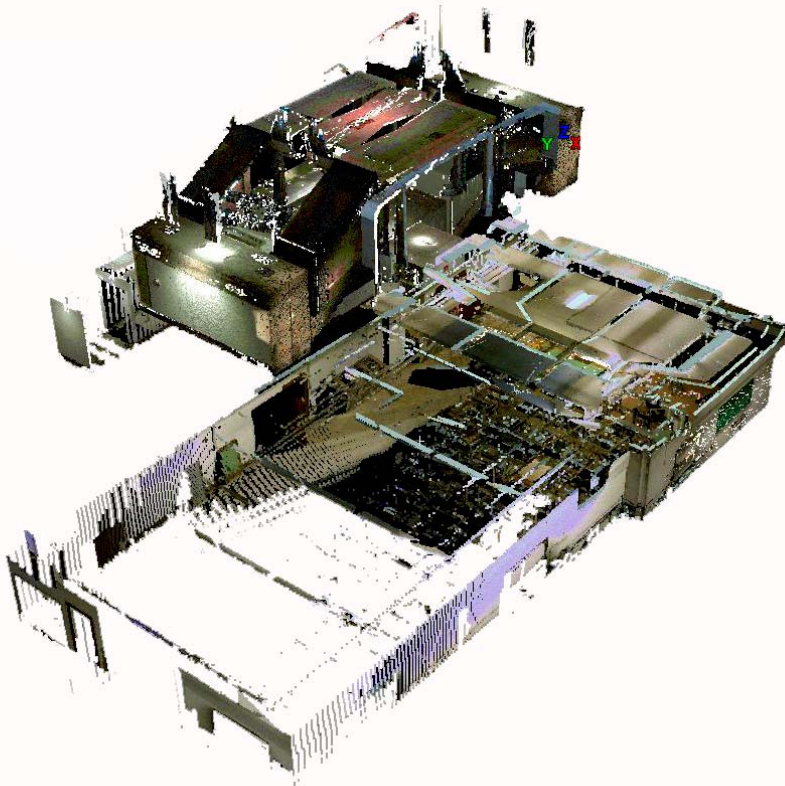
# Geospatial Modeling & Visualization

*A Method Store for Advanced Survey  
and Modeling Technologies*

[GMV](#) [Geophysics](#) [GPS](#) [Modeling](#) [Digital Photogrammetry](#) [3D Scanning](#) [Equipment](#) [Data and Projects by Region](#)

## University of Arkansas – Vol Walker Building – Interior Basement Level

Working with the University of Arkansas' Facilities Management and Planning Departments, CAST is documenting the historical Vol Walker Building and its renovation. Here are merged scans of the basement or ground floor of the interior, which were collected with the Z+F 5005i Scanner. The project includes multiple floors within the building interior as well as the building exterior. Interior scans were collected with a point spacing that ranged from less than a centimeter at the most dense (at a range of < 1 meter) to approximately 5 cm at the least dense (at a range of 25 meters). These scans were then reduced to a more consistent point spacing of 1 cm for potential future use in historical preservation documentation. Exterior scans were collected with a point spacing of approximately 5-10 cm. The data sets have been separated due to file size and data density.



[Vol\\_Walker\\_Building\\_Interior\\_Basement.zip](#) (4.4 mb) (1 cm spacing in .pts file format)

[Sitemap\\_Vol\\_Walker\\_Basement.htm](#) -Explore the data set in Leica TruView, which requires Leica [TruView free viewer](#) and Internet Explorer. For instructions on using the free TruView data viewer and for a complete list of links to the TruView data related to this project, please see: [Accessing\\_Vol\\_Walker\\_Interior\\_TrueViews](#).

**Please note.** This data is distributed under a Creative Commons 3.0 License (see <http://creativecommons.org/licenses/by-nc/3.0/> for the full license). You are free to share and remix these data under the condition that you include attribution as provided here. You may not use the data or products in a commercial purpose without additional approvals. Please attach the following credit to all data and products developed there from:

Credits:

Data was collected in collaboration with University of Arkansas Facilities Management, Operations and Maintenance and Campus Planning Divisions with outstanding assistance from Bob Harris, Construction Coordinator.

Please cite this document as: Stevens, Caitlin. 2012. University of Arkansas – Vol Walker Building – Interior Basement Level. CAST Technical Publications Series. Number 7650. <http://gmvcast.uark.edu/scanning/university-of-arkansas-vol-walker-building-interior-basement-level-3/>. [Date accessed: 27 April 2013]. [Last Updated: 9 May 2012]. *Disclaimer: All logos and trademarks remain the property of their respective owners.*

Login

---

[Log in](#)

© 2013 - Geospatial Modeling & Visualization