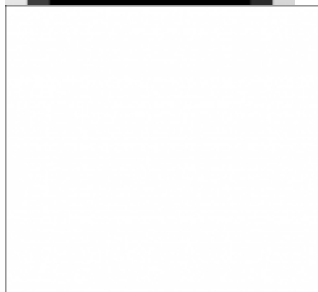
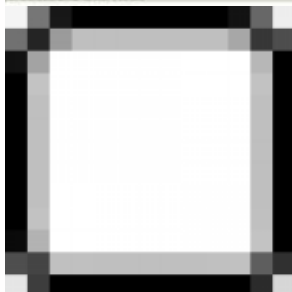
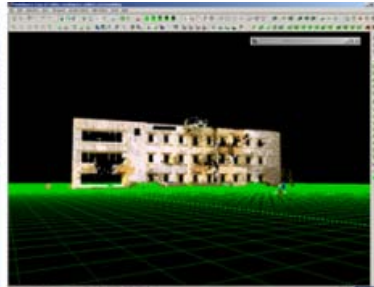
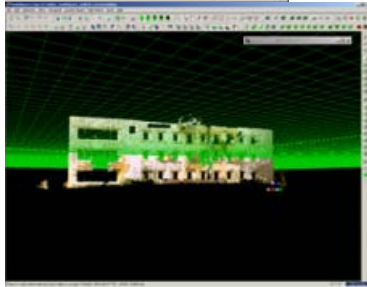


# Geospatial Modeling & Visualization

A Method Store for Advanced Survey and Modeling Technologies

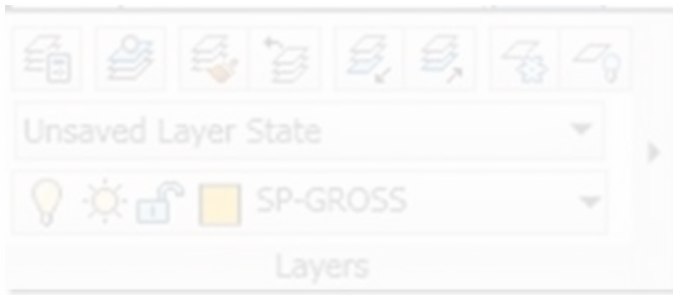
[GMV](#) [Geophysics](#) [GPS](#) [Modeling](#) [Digital Photogrammetry](#) [3D Scanning](#) [Equipment](#) [Data and Projects by Region](#)

Tag Archives: *Leica*

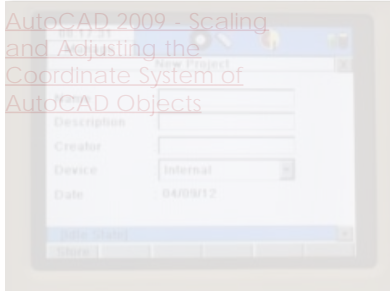


[Scan Sequence Form](#)

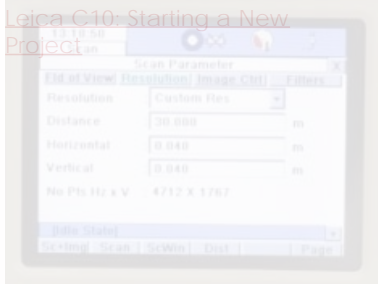




[AutoCAD 2009 - Scaling and Adjusting the Coordinate System of AutoCAD Objects](#)



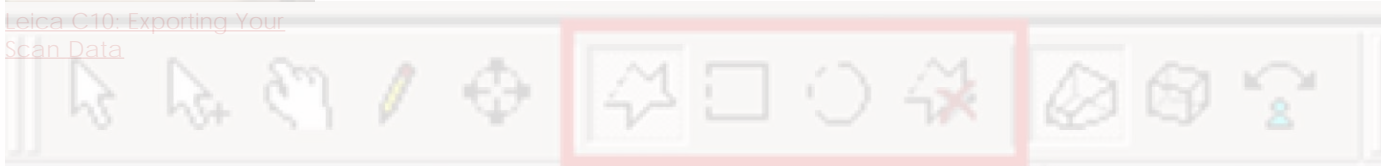
[Leica C10: Starting a New Project](#)



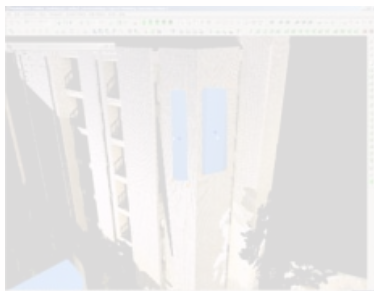
[Leica C10: Starting a Scan](#)



[Leica Cyclone 7.0: Exporting Your Scan Data](#)



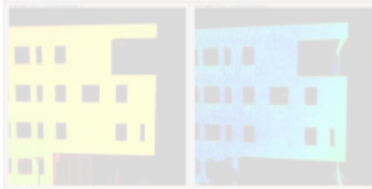
[Leica Cyclone 7.0: Modeling a Flat Surface](#)



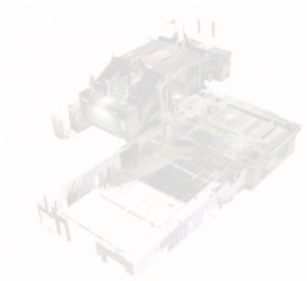
[Leica Cyclone 7.0: Modeling - Editing, Extending, and Extruding Rectangular Patches](#)



[Leica Cyclone 7.0:  
Modeling Non-  
Rectangular Patches](#)



[Leica Cyclone 7.0.1  
Registering Scans in  
Leica CloudWorx 4.2 and  
AutoCAD 2012 - Digitizing  
a Point Cloud in 2D](#)



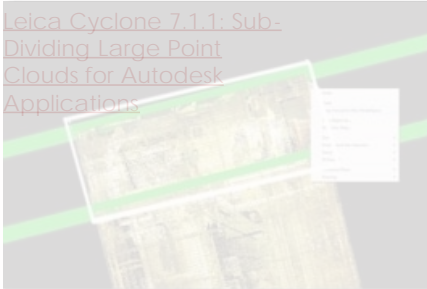
[University of Arkansas -  
Mohr Walker Building Plug-In  
Interior Basement Level](#)



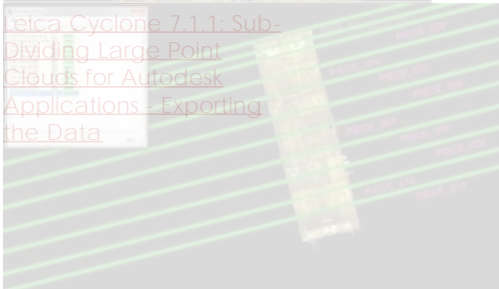
[Instructions for Using  
Leica's TruView Viewer](#)



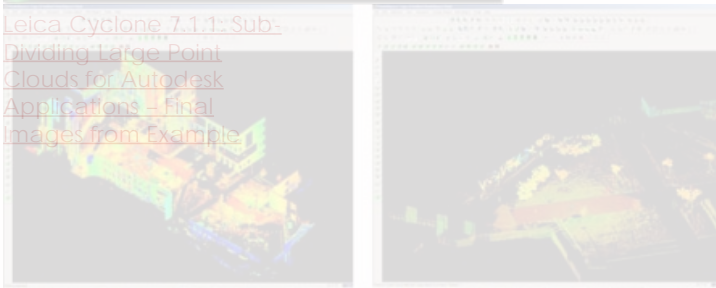
[Leica Cyclone 7.1.1: Sub-Dividing Large Point Clouds for Autodesk Applications](#)



[Leica Cyclone 7.1.1: Sub-Dividing Large Point Clouds for Autodesk Applications - Exporting the Data](#)



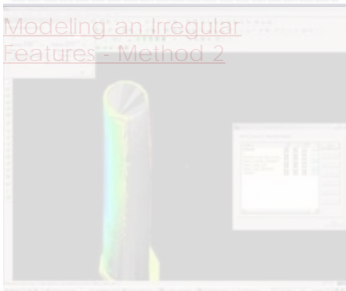
[Leica Cyclone 7.1.1: Sub-Dividing Large Point Clouds for Autodesk Applications - Final Images from Example](#)



[Leica Cyclone - Creating a Mesh and Modeling Surface Topography: Setting Up the Model Space and Break Lines](#)



[Modeling an Irregular Feature - Method 2](#)



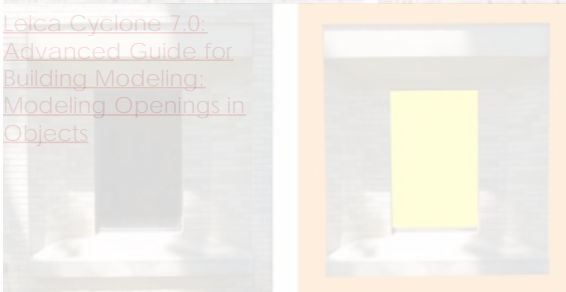
[Modeling an Irregular Feature - Comparing Using a Solid Primitive in Modeling Objects to Original Points](#)



[Leica Cyclone - Creating a Mesh and Modeling Surface Topography: Creating the Topographic Mesh](#)



[Leica Cyclone 7.0: Advanced Guide for Building Modeling: Modeling Openings in Objects](#)



[Leica Cyclone 7.0: Advanced Guide for Building Modeling: Modeling a Complex Shape](#)



1. [Advanced Guide for](#)
2. [Building Modeling:](#)
3. [Modeling and Placing](#)
4. [Repeating Features](#)
5. 5
6. 6
7. 7
8. 8
9. 9

[Login](#)

[Log in](#)