

Geospatial Modeling & Visualization

A Method Store for Advanced Survey and Modeling Technologies

GMV Geophysics GPS Modeling Digital Photogrammetry 3D Scanning Equipment Data and Projects by Region

On-the-fly and Permanent Orthorectification of NITF Images in ArcMap

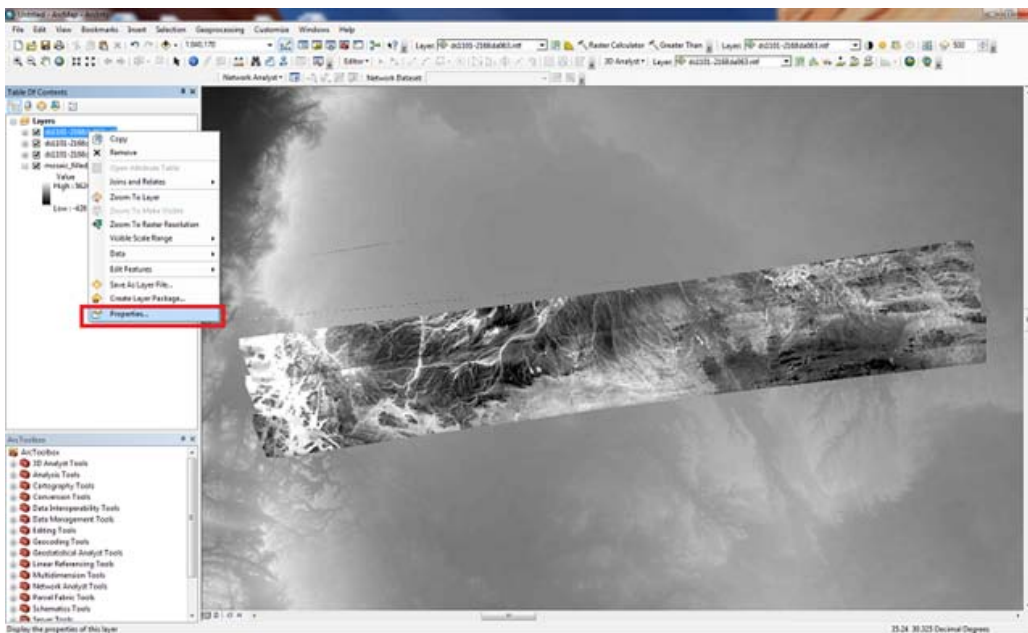
About NITF files

The NITF (National Imagery Transmission Format Standard) format is commonly used for georeferenced imagery and has the ability to store a large amount of ancillary data and metadata along with the image itself, all in one file. One of the more useful pieces of ancillary data optionally stored within an NITF file is known as RPCs (Rapid Polynomial Coefficients). With the use of RPCs and elevation data for the area, complete orthorectification is possible. For example data, see CAST's "[Corona Atlas of the Middle East](#)" and choose from the large number of NITF files available for download.

Viewing and creating NITF orthoimage in ArcMap

Written for ArcMap 10

1. Open ArcMap and add one or more NITF image files.
2. Add a DEM covering the area.
3. Right-click the image name in the Table of Contents and choose Properties.



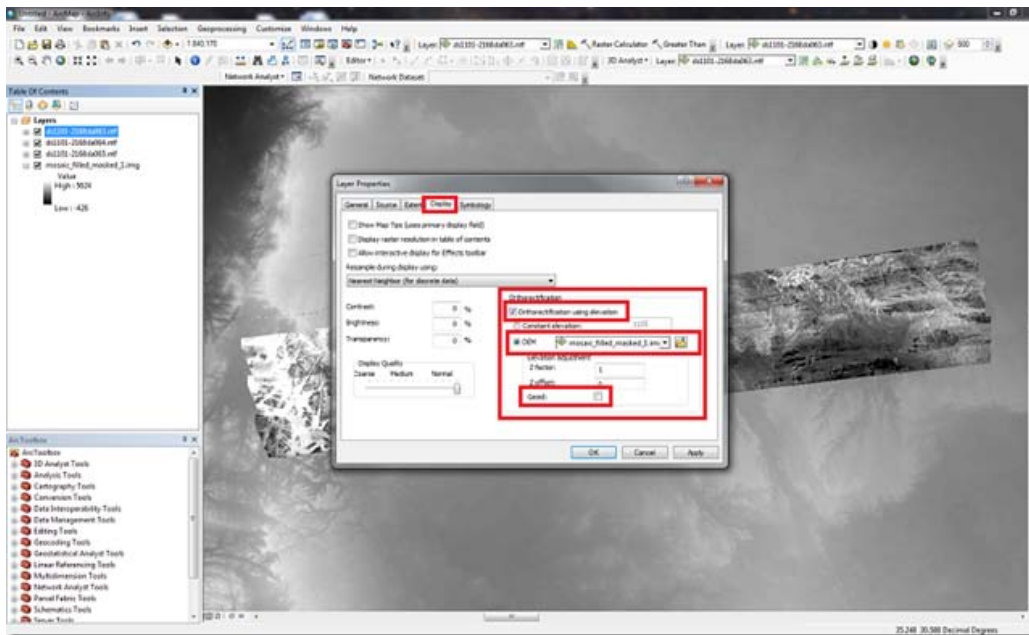
4. Under the Display tab in the Layer Properties dialog, make the following three changes in the "Orthorectification" box and click OK:

1. Check "Orthorectification using elevation".

2. Click radio button for "DEM" and use the drop-down menu to choose the appropriate DEM.

3. Make sure "Geoid" is unchecked.

These Layer Properties will need to be set for each NITF file you add to ArcMap.



5. Each NITF image with the settings from step 4 above should now appear orthorectified. To make this permanent, they will need to be exported to create a new file and format (ArcMap will not export to NITF). To do this, there are two options:

1. Use the "Export Data" dialog found by right-clicking the NITF file's name in the Table of Contents, holding the mouse over "Data" in the context menu, and clicking "Export Data". Options for extent, spatial reference, cell size, file location, name and format are available in this dialog. Choose the desired settings and export.

2. Use the "Create Orthorectified Dataset" tool in the ArcToolbox. See the ArcMap help for help with this tool.

Please cite this document as: Barnes, Adam. 2011. On-the-fly and Permanent Orthorectification of NITF Images in ArcMap.CAST Technical Publications Series. Number 7340. <http://gmvc.cast.uark.edu/gisr/software-remotesensing/arcgis/workflow-arcgis/on-the-fly-and-permanent-orthorectification-of-nitf-images-in-arcmap-2/>. [Date accessed: 27 April 2013]. [Last Updated: 9 May 2012]. *Disclaimer: All logos and trademarks remain the property of their respective owners.*

Login

Log in